



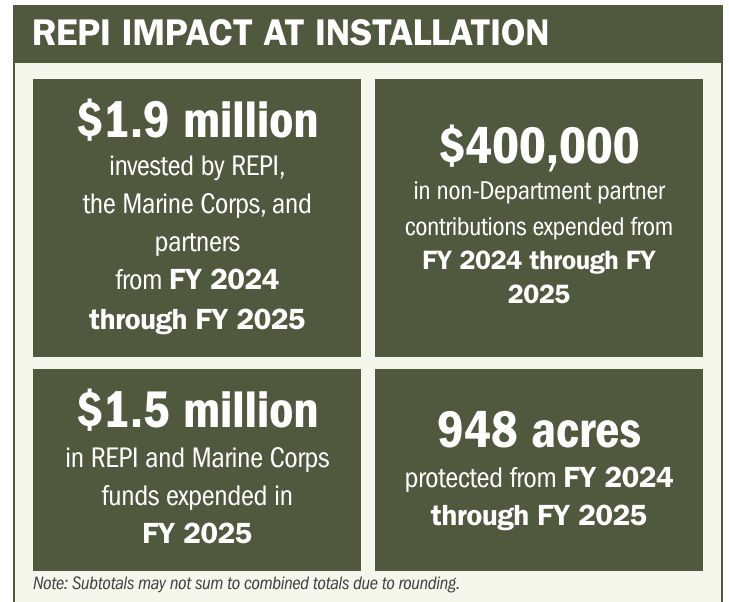
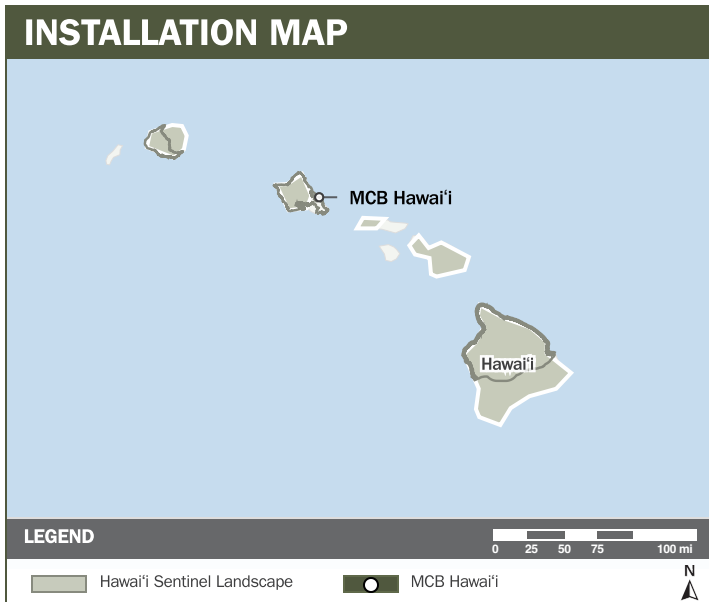
# MCB HAWAI'I

## ABOUT THE INSTALLATION

Marine Corps Base Hawai'i (MCBH) manages 14 training areas across the island of O'ahu and is located within the Hawai'i Sentinel Landscape. MCBH hosts air, ground and logistics capabilities including live-fire training, stand-in force training, and unmanned aerial systems — operations critical to ensuring warfighter readiness and maintaining force posture within the Indo-Pacific region.

## STRENGTHENING MISSION READINESS THROUGH REPI INVESTMENTS

The Department of War's (DoW) Readiness and Environmental Protection Integration (REPI) Program has played a critical role in supporting MCBH's long-term operational success. Through strategic land conservation and partnership-driven investments, REPI funding has helped provide off-installation encroachment threat mitigation, creation of compatible land use buffers, and implementation of natural and cultural resource management and protections that benefit the Joint Services' operational and training capabilities.



## PROJECT OVERVIEW

### INCOMPATIBLE DEVELOPMENT—10 U.S.C. § 2684A

- MCBH's national defense mission depends on unrestricted access to training areas and rapid deployment readiness to sustain operational capabilities across its managed training areas.
- Urban growth and incompatible land use bring about noise concerns and safety risks from adjacent communities that directly affect airborne operations and testing capabilities.
- To address these threats, MCBH is leveraging the REPI Program funds under 10 U.S.C. § 2684a to protect critical training land. These efforts safeguard key training corridors and ensure access to sustain strategic mission capabilities.





# MCB HAWAI'I

## PROJECT OVERVIEW (CONTINUED)

### NATURAL RESOURCES MANAGEMENT—10 U.S.C. § 2684A

- Training areas at MCBH overlap with critical habitats that are home to a number of endemic threatened and endangered species.
- Urban development around the installation increases habitat loss, wildfire risks, and environmental constraints that threaten military training operations and jeopardize compliance with species management mandates critical to installation operations.
- Leveraging authority under 10 U.S.C. § 2684a, this initiative supports watershed protection to reduce wildfire risk, lessen frequency and severity of flooding, protect water quality and improve native habitats, enhancing installation resilience.



## KEY FISCAL YEAR MILESTONES AT MCB HAWAI'I\*

- 2020** Marine Corps Base Hawai'i received its first REPI funding allocation, initiating efforts to prevent incompatible development and strengthen long term mission assurance.
- 2023** Received REPI Challenge funding for two projects in partnership with the Hawai'i Department of Land and Natural Resources Division of Forestry and Wildlife to support at risk species recovery through targeted habitat restoration.
- 2024** The Hawai'i Sentinel Landscape was formally designated, spanning more than two million acres, with Marine Corps Base Hawai'i serving as a key installation anchoring landscape scale conservation and resilience efforts.
- 2025** Protected 934 acres within Kaneohe Pali, designated Critical Habitat for 30 listed species and 28 native endemic species, advancing both mission resilience and regional ecological stewardship.

\* These milestones demonstrate how the installation is strategically utilizing the REPI Program to mitigate encroachment risks and enhance mission assurance. While not exhaustive, the list highlights the various approaches installations are using to preserve critical testing and training capabilities essential to national defense.



Subscribe to the REPI Program Listserv by scanning the QR code.  
For more information about the REPI Program and supportive DOD efforts, please visit [www.repi.mil](http://www.repi.mil).