



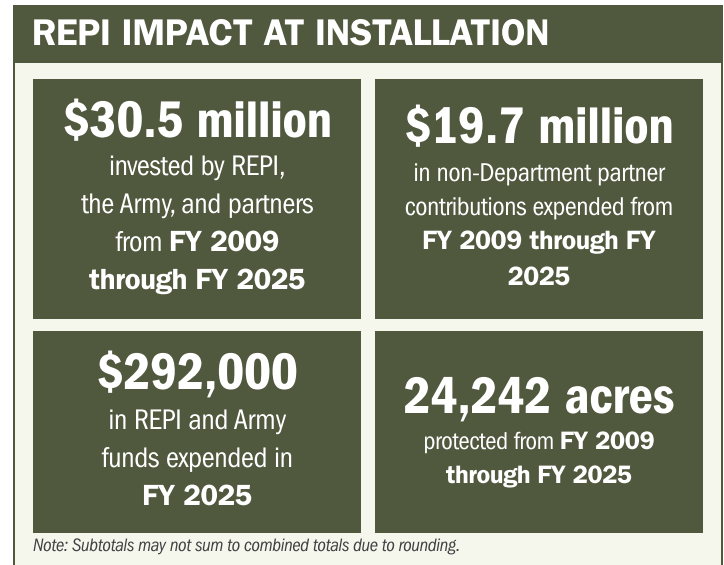
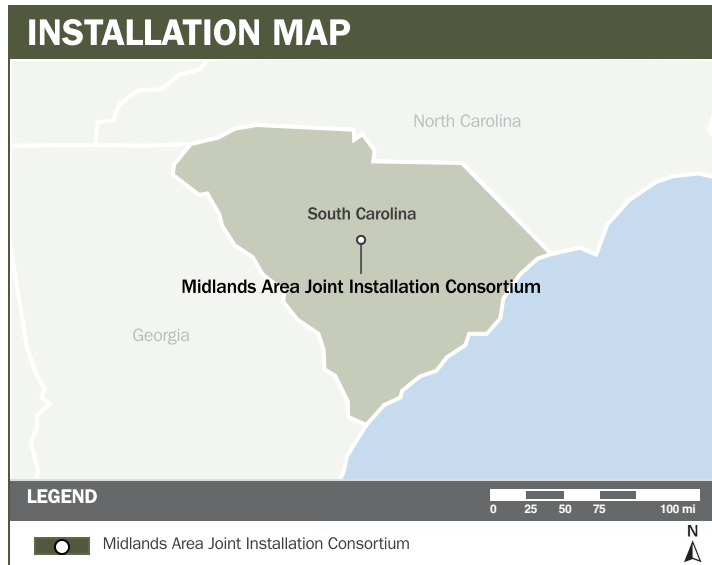
# MIDLANDS AREA JOINT INSTALLATION CONSORTIUM

## ABOUT THE INSTALLATION

Comprised of five military installations, the Midlands Area Joint Installation Consortium (MAJIC) formed in 2007 in response to a pressing need to protect training resources at Fort Jackson, Shaw Air Force Base, McEntire Joint National Guard Base, Poinsett Bombing Range, and McCrady Training Center. These installations provide a uniquely integrated training environment supporting ground and air forces across the mid-Atlantic region. The installations encompass more than 70,000 acres of training land, extensive live-fire ranges, maneuver space, and mission-critical controlled airspace.

## STRENGTHENING MISSION READINESS THROUGH REPI INVESTMENTS

The DoW's Readiness and Environmental Protection Integration (REPI) Program has helped MAJIC purchase land within the buffer zones, preserving critical training areas from incompatible development that could otherwise restrict operations due to safety concerns or noise complaints. The REPI partnership provides the dual benefit of safeguarding military training lands while protecting vital habitats for endangered species, thereby avoiding additional restrictions from environmental regulations.



## PROJECT OVERVIEW

### INCOMPATIBLE DEVELOPMENT—10 U.S.C. § 2684A

- Off-post development reduces installation resilience by increasing impervious surfaces and, in turn, stormwater runoff volumes.
- Stormwater run-off and flooding increase the risk of lost training days and have resulted in Shaw AFB's access gates being inaccessible after high-rain volume events that are occurring more frequently.
- To combat these risks, MAJIC is leveraging funding under REPI's 10 U.S.C. § 2684A to prevent the loss of training days and protect the mission.





# MIDLANDS AREA JOINT INSTALLATION CONSORTIUM

## PROJECT OVERVIEW (CONTINUED)

### INSTALLATION RESILIENCE—10 U.S.C. § 2684A

- MAJIC is home to the Red-cockaded Woodpecker, Rough-leaved Loosestrife, and Smooth Coneflower.
- These species require minimizing disturbance to nesting, foraging, and occupied habitat areas that could limit mission growth, new range construction, and the use of new weapons systems.
- The REPI Program has helped MAJIC mitigate restrictions on military activities due to a legally mandated commitment to protect and promote the recovery of these species habitat, protecting mission growth and the construction of new ranges and weapons systems.



## KEY FISCAL YEAR MILESTONES AT MIDLANDS AREA JOINT INSTALLATION CONSORTIUM\*

2009



The first REPI project is established at MAJIC, protecting training areas and critical habitats.



\* These milestones demonstrate how the installation is strategically utilizing the REPI Program to mitigate encroachment risks and enhance mission assurance. While not exhaustive, the list highlights the various approaches installations are using to preserve critical testing and training capabilities essential to national defense.



Subscribe to the REPI Program Listserv by scanning the QR code.  
For more information about the REPI Program and supportive DOD efforts, please visit [www.repi.mil](http://www.repi.mil).