



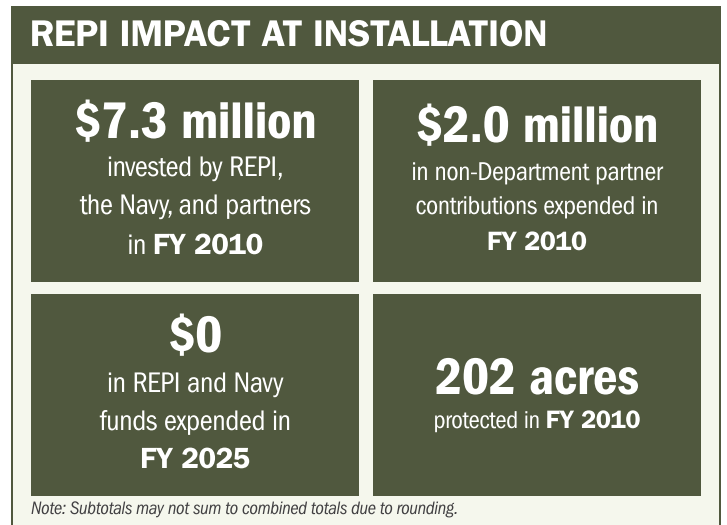
# NAS JRB NEW ORLEANS

## ABOUT THE INSTALLATION

Providing critical access to air ranges, Naval Air Station (NAS) Joint Reserve Base (JRB) New Orleans' multiple readiness missions require training pilots on several aircraft, including helicopters, from multiple Services. NAS JRB New Orleans also maintains readiness at all times to launch in support of the Department of Homeland Security and coastal rescue operations. The base allows for overwater operations, live weapon firings, and urban close-air-support environments. Its proximity to the gulf also reduces travel time to critical oil production facilities, saving precious minutes for search and rescue operations.

## STRENGTHENING MISSION READINESS THROUGH REPI INVESTMENTS

The Department of War's (DoW) Readiness and Environmental Protection Integration (REPI) Program played a critical role in supporting NAS JRB New Orleans' long-term operational success. Through strategic land acquisition and partnership-driven conservation easements, REPI funding helped prevent incompatible development, sustaining flight and training capabilities.



## PROJECT OVERVIEW

### INCOMPATIBLE DEVELOPMENT—10 U.S.C. § 2684A

- Investment in infrastructure to support land development and hurricane evacuation is increasing the value and desirability of nearby land.
- Uncontrolled development in the vicinity of the installation threatens to constrain aviation training because of noise, safety, and encroachment concerns, directly affecting the installation's ability to maintain required operational tempo. Increased population density near flight paths elevates the risk of complaints, airspace restrictions, and limitations on night or low altitude training, which degrades mission readiness.





# NAS JRB NEW ORLEANS

## PROJECT OVERVIEW (CONTINUED)

- NAS JRB New Orleans partnered with the REPI Program and the Trust for Public Land to prevent incompatible development near one of its most active runways, where a proposed 600-home subdivision would have placed residents directly under critical flight operations.

## KEY FISCAL YEAR MILESTONES AT NAS JRB NEW ORLEANS\*

2009



NAS JRB New Orleans stands up its first REPI encroachment project to protect operations against increasing development.

2010



The installation successfully completed its REPI project, safeguarding mission success and ensuring installation resilience against weather and incompatible development.



\* These milestones demonstrate how the installation is strategically utilizing the REPI Program to mitigate encroachment risks and enhance mission assurance. While not exhaustive, the list highlights the various approaches installations are using to preserve critical testing and training capabilities essential to national defense.



Subscribe to the REPI Program Listserv by scanning the QR code.  
For more information about the REPI Program and supportive DoW efforts, please visit [www.repi.mil](http://www.repi.mil).