



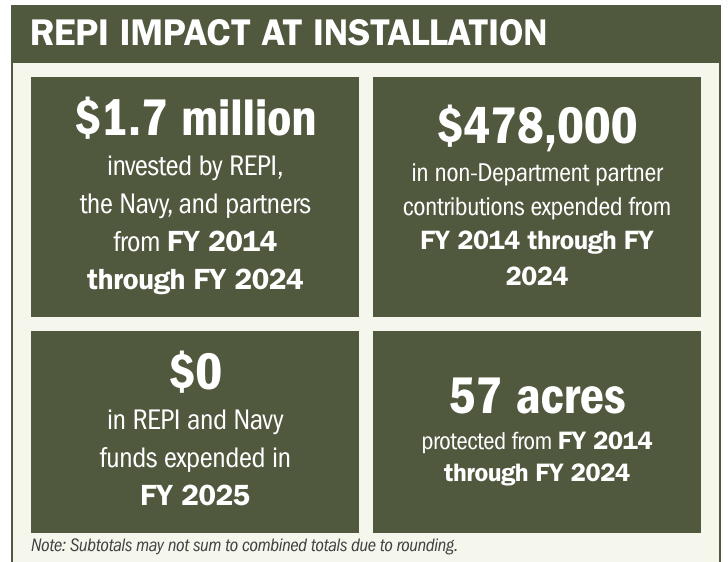
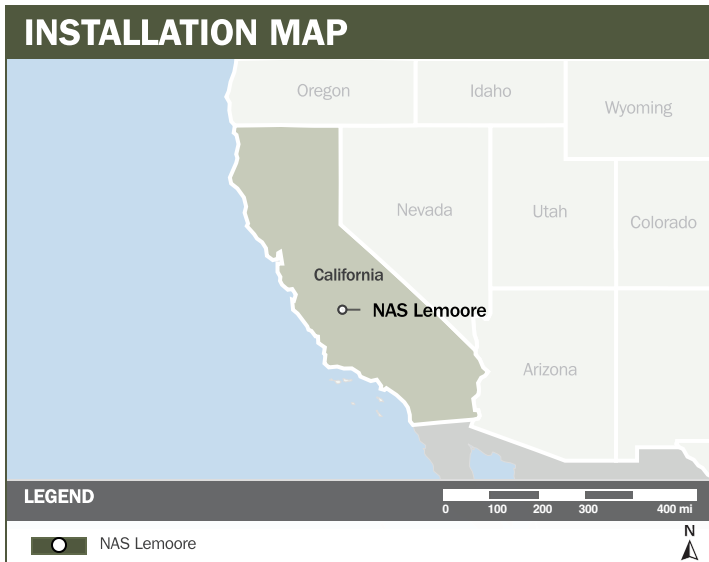
NAS LEMOORE

ABOUT THE INSTALLATION

Naval Air Station (NAS) Lemoore spans nearly 30,000 acres in California’s San Joaquin Valley and serves as the Navy’s newest and largest master jet base. It hosts the Navy’s entire West Coast fighter and attack capability, supporting Commander Strike Fighter Wing Pacific and Commander Joint Strike Fighter Wing in training, manning, and equipping operational squadrons. As one of the Navy’s busiest airfields, NAS Lemoore conducts more than 200,000 annual aircraft operations to sustain fleet readiness and advanced aviation training.

STRENGTHENING MISSION READINESS THROUGH REPI INVESTMENTS

The Department of War’s (DoW) Readiness and Environmental Protection Integration (REPI) Program has played a critical role in supporting NAS Lemoore’s long-term operational success. Through strategic compatible land use conservation and partnership-driven species management, REPI funding has helped prevent incompatible development and sustain critical attack and strike fighter capabilities.



PROJECT OVERVIEW

- INCOMPATIBLE DEVELOPMENT—10 U.S.C. § 2684A**
- NAS Lemoore’s mission depends on unrestricted access to its airfield and low-altitude approach corridors, which support more than 200,000 annual flight operations.
 - Urban growth and incompatible development threaten long-term training flexibility. Nearby residential expansion drives noise and safety concerns that constrain high-noise events, low-altitude flights, and nighttime operations.
 - To counter these risks, NAS Lemoore is leveraging REPI funds under 10 U.S.C. § 2684a to secure restrictive-use easements within the Military Influence Area, protecting key approach corridors and preserving West Coast fighter and attack capability.





NAS LEMOORE

PROJECT OVERVIEW (CONTINUED)

HABITAT PRESERVATION – SIKES ACT—16 U.S.C. § 670C-1

- Urban development near NAS Lemoore degrades habitat for the Western Burrowing Owl—a California candidate species—and increases bird-aircraft strike hazards.
- Bird strikes average \$500,000 per incident, posing significant safety risks and degrading operational readiness.
- Through REPI and Sikes Act authority, NAS Lemoore reduces owl occupancy in operational areas by securing conservation easements on suitable off-installation habitat and relocating owls more than 11 miles from the airfield. These efforts preserve critical habitat while maintaining a virtually unimpeded training environment.



KEY FISCAL YEAR MILESTONES AT NAS LEMOORE*

2014



First REPI project established to protect critical airspace.

2020



Updated Air Installation Compatible Use Zone to mitigate incompatible development beyond the installation boundary.

2023



REPI funds initiate the owl translocation and habitat management project with the Tachi Yokut tribe and SRT partners.

* These milestones demonstrate how the installation is strategically utilizing the REPI Program to mitigate encroachment risks and enhance mission assurance. While not exhaustive, the list highlights the various approaches installations are using to preserve critical testing and training capabilities essential to national defense.



Subscribe to the REPI Program Listserv by scanning the QR code.
For more information about the REPI Program and supportive DoW efforts, please visit www.repi.mil.