



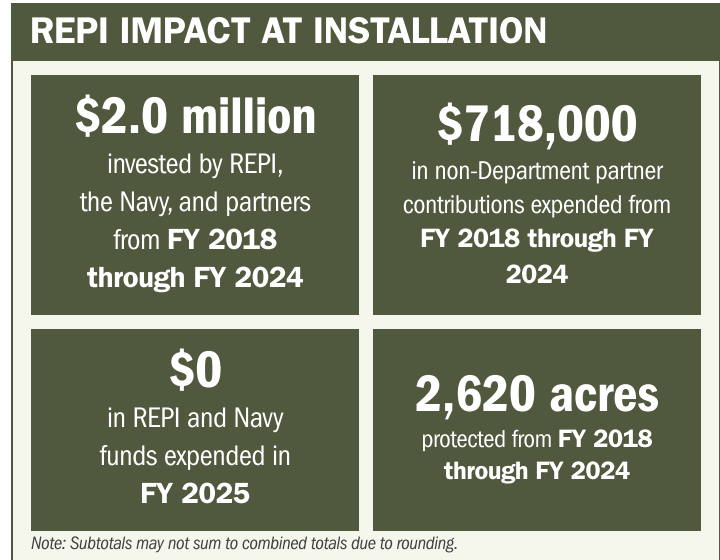
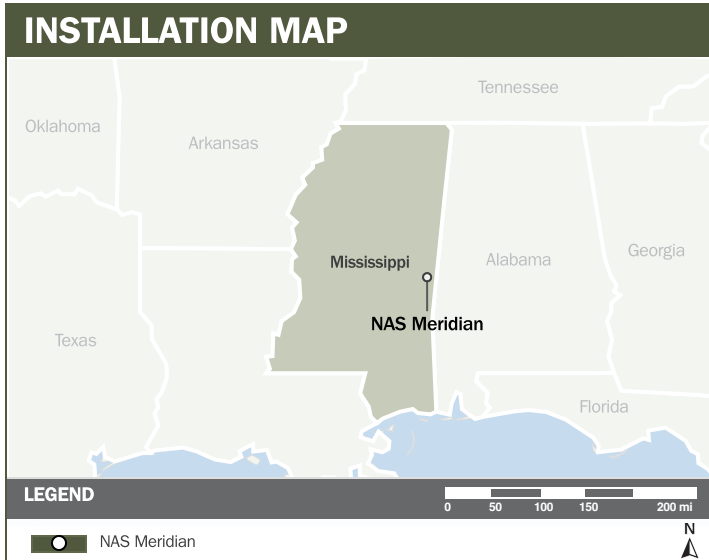
NAS MERIDIAN

ABOUT THE INSTALLATION

Naval Air Station (NAS) Meridian is located in East Central Mississippi. The installation is one of the U.S. Navy's newest premier air installations and one of only two Department of War (DoW) locations to provide intermediate and advanced jet training for carrier operations. The installation is home to Training Wing One and two squadrons that train half of Navy and Marine Corp's tactical jet fighter carrier aviators. NAS Meridian plays a vital role in training and deployment of Naval and Marine aviators that are essential to national defense readiness.

STRENGTHENING MISSION READINESS THROUGH REPI INVESTMENTS

The DoW's Readiness and Environmental Protection Integration (REPI) Program has played a critical role in supporting NAS Meridian's long-term operational success. Through strategic land acquisition and partnership-driven regulation and education, REPI funding has helped prevent incompatible development, preserve training flexibility, and sustain critical installation access.



PROJECT OVERVIEW

INCOMPATIBLE DEVELOPMENT—10 U.S.C. § 2684A

- NAS Meridian's ability to train carrier-qualified aviators depends on maintaining unrestricted access to the tactical carrier landing pattern, but urban growth and incompatible land use are encroaching on key segments of this airspace.
- Nearby residential development is already driving noise complaints and training-hour restrictions, while high-density housing in accident potential zones increases public safety risks and introduces potential height obstructions that disrupt tactical flight patterns.
- Leveraging authority under 10 U.S.C. § 2684a, NAS Meridian is working to secure restrictive use easements to preserve compatible development in key strategic areas of the carrier training pattern, where aircraft are their lowest, slowest, and loudest.





NAS MERIDIAN

KEY FISCAL YEAR MILESTONES AT NAS MERIDIAN*

2015



Mississippi Development Authority provides \$1M in matching funds, establishing NAS Meridian's first REPI project.

2017



Completion of the NAS Meridian Joint Land Use Study with surrounding counties and municipalities, identifying strategic protection areas essential to mission continuity.



* These milestones demonstrate how the installation is strategically utilizing the REPI Program to mitigate encroachment risks and enhance mission assurance. While not exhaustive, the list highlights the various approaches installations are using to preserve critical testing and training capabilities essential to national defense.



Subscribe to the REPI Program Listserv by scanning the QR code.
For more information about the REPI Program and supportive DoW efforts, please visit www.repi.mil.