



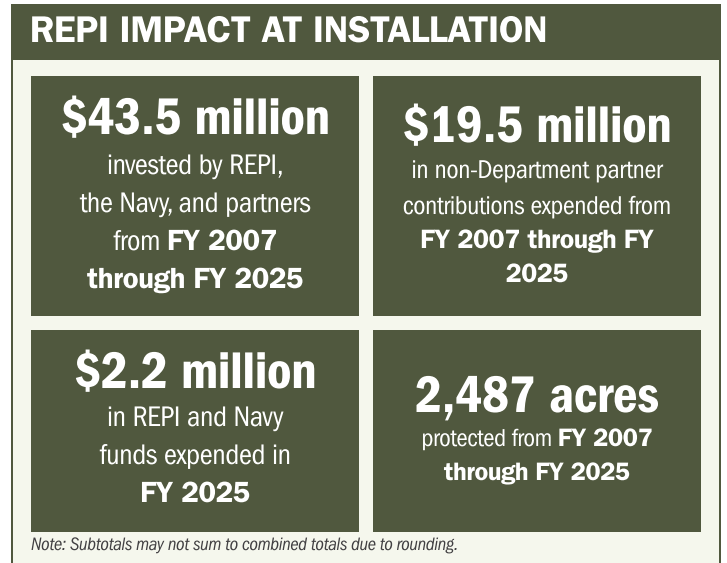
NAS WHIDBEY ISLAND

ABOUT THE INSTALLATION

Naval Air Station (NAS) Whidbey Island is located along Washington’s Puget Sound, with its Outlying Landing Field (OLF) Coupeville several miles to the south supporting field carrier landing practice. The installation is home to the Navy’s EA18G Growler electronic attack community as well as patrol and reconnaissance aircraft. Aircrews train for antisubmarine warfare, maritime surveillance, and electronic warfare missions that protect fleet surface units by collecting radio intelligence and disrupting enemy radar systems. NAS Whidbey Island’s capabilities are central to the Navy’s tactical electronic attack mission and broader maritime operational readiness.

STRENGTHENING MISSION READINESS THROUGH REPI INVESTMENTS

The Department of War’s (DoW) Readiness and Environmental Protection Integration (REPI) Program has played a critical role in supporting NAS Whidbey Island’s long-term operational success. Through strategic land acquisition, REPI funding has helped prevent incompatible development to ensure continued flight operations and carrier landing training between the air station and the OLF.



PROJECT OVERVIEW

INCOMPATIBLE DEVELOPMENT—10 U.S.C. § 2684A

- NAS Whidbey Island’s aviator training mission depends on maintaining specific airfield conditions and unrestricted flight operations.
- Incompatible development around the installation threatens training schedules, airfield conditions, and future facility expansion. Rapid population growth in adjacent communities is placing pressure on undeveloped land surrounding both the air station and OLF Coupeville, jeopardizing uninterrupted operations. Dense residential development also directly affects EA18G Growler training by increasing noise complaints and related litigation.





NAS WHIDBEY ISLAND

PROJECT OVERVIEW (CONTINUED)

- To counter these risks, NAS Whidbey Island leverages REPI funds under 10 U.S.C. § 2684a to protect critical training land, safeguarding key training corridors and airfield conditions needed for continuous flight operations and field carrier landing practice between the air station and the OLF.

KEY FISCAL YEAR MILESTONES AT NAS WHIDBEY ISLAND*

2013 NAS Whidbey Island receives REPI funding, establishing the installation's first REPI project.

2015 NAS Whidbey Island announces expanded EA 18G Growler operations.

2021 NAS Whidbey Island completes an Air Installations Compatible Use Zones (AICUZ) study update.

2025 The Island County Board of Commissioners approves inclusion of the 2021 AICUZ noise contours and APZs in the 2025 Comprehensive Plan update.

* These milestones demonstrate how the installation is strategically utilizing the REPI Program to mitigate encroachment risks and enhance mission assurance. While not exhaustive, the list highlights the various approaches installations are using to preserve critical testing and training capabilities essential to national defense.



Subscribe to the REPI Program Listserv by scanning the QR code.
For more information about the REPI Program and supportive DoW efforts, please visit www.repi.mil.