



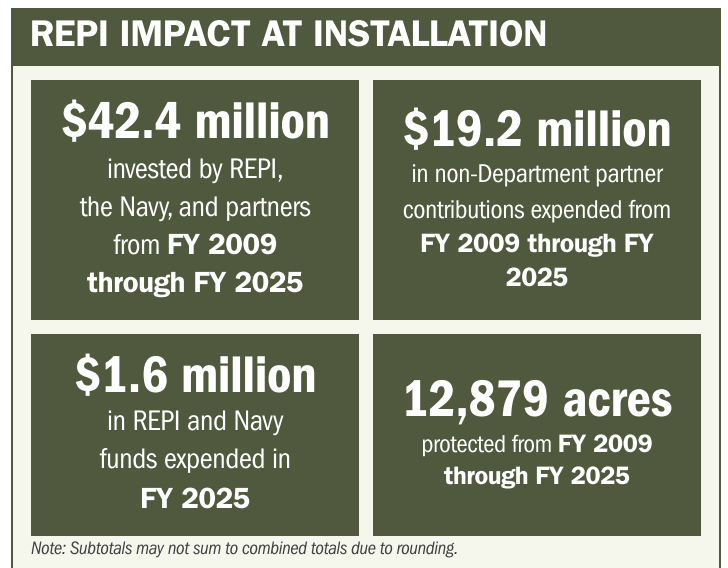
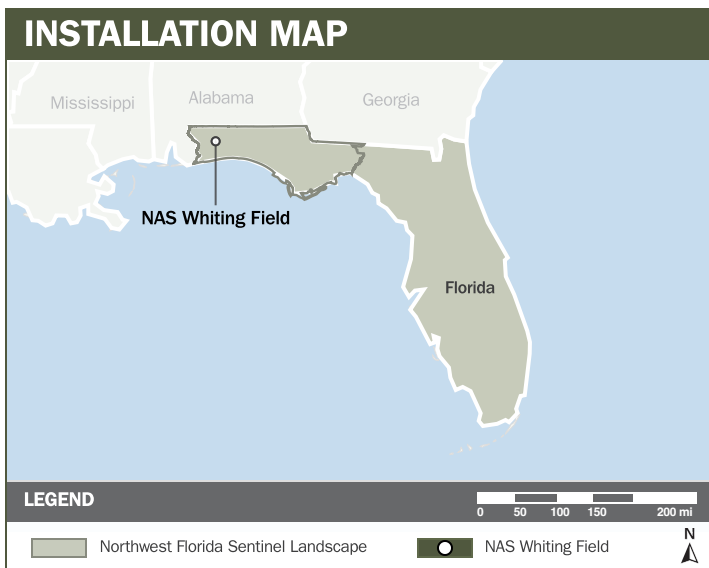
NAS WHITING FIELD

ABOUT THE INSTALLATION

Naval Air Station (NAS) Whiting Field is located in Florida's Northwest Panhandle and within the Northwest Florida Sentinel Landscape. The installation makes up the busiest aviation complex in the world, with flight operations that routinely annually exceed 1.3 million and account for 18% of all Navy and Marine Corps flight hours worldwide. NAS Whiting Field supports training for all helicopter pilots across the Navy, Marine Corps and Coast Guard, and 60% of all primary pilot fixed-wing training for the Navy and Marine Corps

STRENGTHENING MISSION READINESS THROUGH REPI INVESTMENTS

The Department of War's (DoW) Readiness and Environmental Protection Integration (REPI) Program is key in helping to safeguard NAS Whiting Field's long-term operational success. Through strategic and partnership-driven restrictive easement acquisition, REPI funding has helped prevent incompatible development, preserve training flexibility, and sustain critical capabilities beyond the installation boundary.



PROJECT OVERVIEW

INCOMPATIBLE DEVELOPMENT—10 U.S.C. § 2684A

- NAS Whiting Field's training mission depends on unrestricted access to critical flight paths and safety footprints.
- Incompatible land use threatens to reduce the volume of flight operations, jeopardizing mission assurance. Additionally, population increases in adjacent communities directly affect critical operations, causing mission workarounds and flight profile training changes and risking public safety, airspace competition, and mission flexibility.
- To address these threats, NAS Whiting Field leverages REPI Program funds under 10 U.S.C. § 2684a to acquire conservation buffers around the air station. These efforts prevent impacts from incompatible development, such as navigational and radar obstructions, light pollution, and communication interruptions, preserving multi-service and multi-platform fixed- and rotary-wing training capabilities.





NAS WHITING FIELD

PROJECT OVERVIEW (CONTINUED)

HABITAT PRESERVATION-SIKES ACT (16 U.S.C. § 670C-1)

- Residential development near NAS Whiting Field degrades surrounding ecosystems.
- These environmental degradations can trigger regulatory training restrictions that limit mission flexibility. Damage to critical habitats may also create on-installation refuge concerns and further increase restrictions on training.
- Leveraging authority under 10 U.S.C. § 2684a, this initiative preserves critical habitat beyond the installation boundary, including the ephemeral wetlands vital to the endangered reticulated flatwoods salamander, and reinforces long-term mission resiliency. The project also mitigates military impacts to tertiary threatened and endangered species and to wetland ecosystems, supporting ongoing partnerships in environmental stewardship and promoting critical aquifer protections.



KEY FISCAL YEAR MILESTONES AT NAS WHITING FIELD*

2009



NAS Whiting Field receives REPI Challenge funding.

2016



NAS Whiting Field, in partnership with Santa Rosa County, completes its Joint Land Use Study. This project was recognized for multiple technical awards.

2019



The installation receives 2684a funding with the REPI Program.

2022



Formally designated as the Northwest Florida Sentinel Landscape, encompassing NAS Whiting Field and eight other military installations. FY2019–FY2023 efforts safeguarded 5,487 acres in non-REPI partner fee-simple acquisitions within NASWF's base buffering and Sentinel Landscape footprints.

2023



Santa Rosa County updates its Land Development Code, adopting all land use recommendations within NAS Whiting Field's Air Installation Compatible Use Zone and addressing noise contours, height restrictions, wind energy impacts, and light pollution concerns.



* These milestones demonstrate how the installation is strategically utilizing the REPI Program to mitigate encroachment risks and enhance mission assurance. While not exhaustive, the list highlights the various approaches installations are using to preserve critical testing and training capabilities essential to national defense.



Subscribe to the REPI Program Listserv by scanning the QR code.
For more information about the REPI Program and supportive DoW efforts, please visit www.repi.mil.