



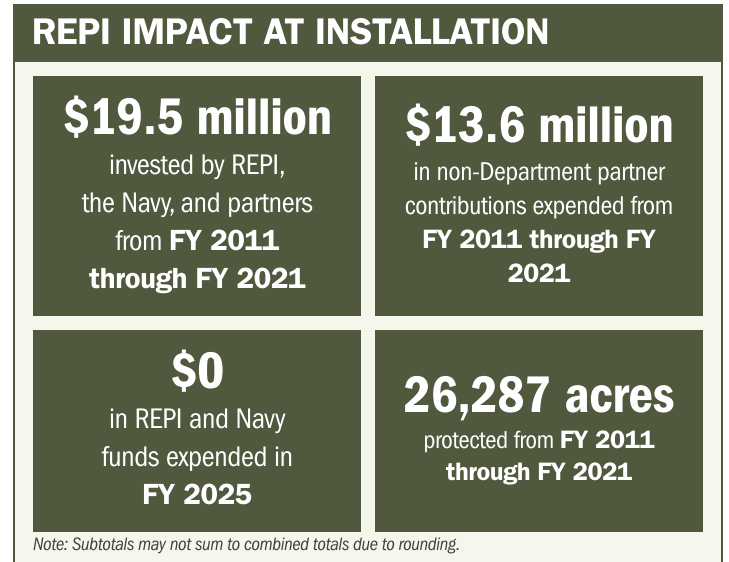
NAWS CHINA LAKE

ABOUT THE INSTALLATION

Naval Air Weapons Station (NAWS) China Lake's remote Mojave Desert location, expansive terrain, and unique airspace and test infrastructure provide unmatched capabilities for research, development, testing, evaluation, and training of advanced Navy weapons systems. Managing over 1.1 million acres, 85 percent of the Navy's land holdings, NAWS China Lake supports vital Research, Development, Acquisition, Test and Evaluation (RDAT&E) efforts that preserve U.S. technological and military advantage. The adjacent R-2508 Complex, the nation's largest overland military special use airspace, is essential for developing and testing cutting-edge capabilities such as hypersonics, directed energy, and integrated sensing, while supporting joint training.

STRENGTHENING MISSION READINESS THROUGH REPI INVESTMENTS

The Department of War's (DoW) Readiness and Environmental Protection Integration (REPI) Program has played a critical role in supporting R-2508 Complex with NAWS China Lake's long-term operational success. REPI funding has helped prevent incompatible development, preserve natural habitat, and in sustaining testing and training within the largest contiguous overland military Special Use Airspace in the country.



PROJECT OVERVIEW

INCOMPATIBLE DEVELOPMENT—10 U.S.C. § 2684A

- NAWS China Lake and the R-2508 Complex face threats from incompatible renewable energy projects, especially wind energy that will negatively impact the installation's ability to conduct airborne systems testing.
- Incompatible development within the R-2508 would restrict flight operations and risk irreversible loss of critical testing and integration capabilities necessary to support national defense.





NAWS CHINA LAKE

PROJECT OVERVIEW (CONTINUED)

- Any loss of testing airspace will degrade radar testing capabilities in the R2508. In coordination with other efforts, the REPI Program helps ease the development of wind facilities in the R2508 and sustain the \$2.2 billion DoW investment into electronic warfare radar testing mission capabilities.
- Severe regional water shortages could also eliminate the local workforce needed to support NAWS China Lake's RDATE mission, potentially forcing mission relocation or termination and risking billions in recent DoW investments
- To address these threats, NAWS China Lake is leveraging REPI Program funds under 10 U.S.C. § 2684a to protect the installation's assets that cannot be replicated elsewhere in the country.

KEY FISCAL YEAR MILESTONES AT NAWS CHINA LAKE*

2008



R-2508 Complex with NAWS China Lake stands up its first REPI encroachment project to protect operations from incompatible development.

2008



The Office of Local Defense Community Cooperation completed an Installation Readiness Program study.

2023



NAWS China Lake and the City of Ridgecrest completed a Military Installation Resilience study. The study analyzed actions necessary to mitigate and enhance installation sustainability through the protection of critical resources such as energy and water.

* These milestones demonstrate how the installation is strategically utilizing the REPI Program to mitigate encroachment risks and enhance mission assurance. While not exhaustive, the list highlights the various approaches installations are using to preserve critical testing and training capabilities essential to national defense.



Subscribe to the REPI Program Listserv by scanning the QR code.
For more information about the REPI Program and supportive DoW efforts, please visit www.repi.mil.