



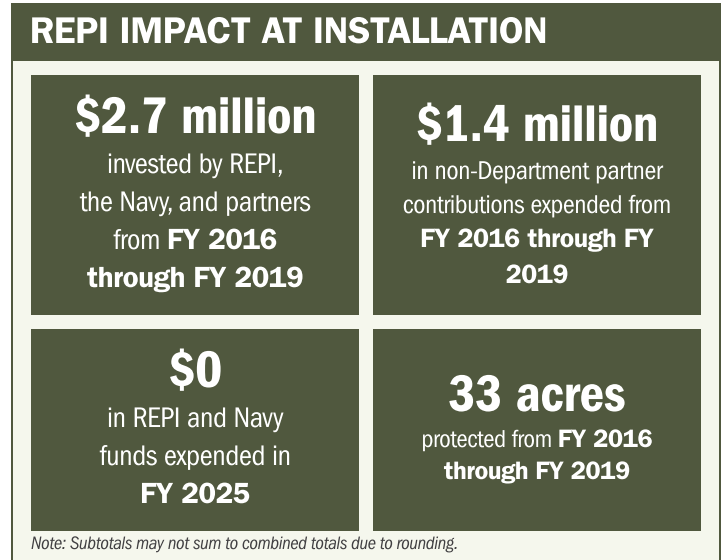
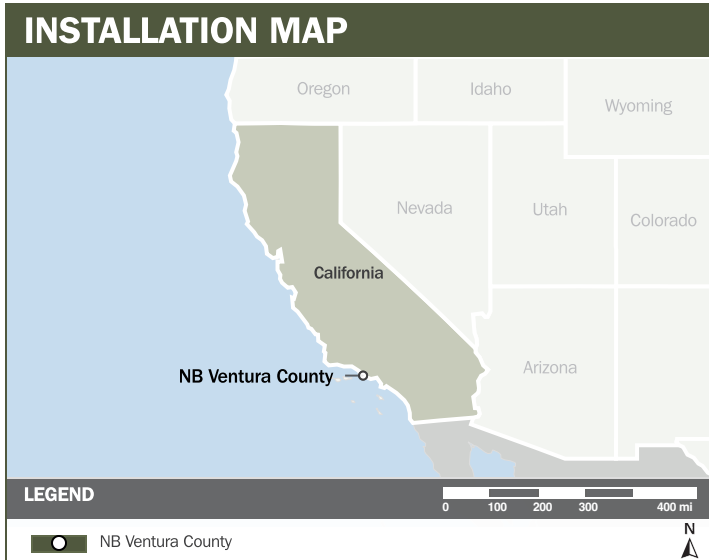
NB VENTURA COUNTY

ABOUT THE INSTALLATION

Naval Base (NB) Ventura County is a key hub for the research, development, testing, and evaluation missions of the Naval Air Warfare Center Weapons Division. Adjacent to the 36,000-square-mile Point Mugu Sea Range, the installation provides direct access to a premier maritime test environment that supports weapons system launch and recovery and operational training. NB Ventura County delivers essential airfield, seaport, and base support services to fleet operating forces and shore activities, and hosts 85 tenant commands, including three warfare centers.

STRENGTHENING MISSION READINESS THROUGH REPI INVESTMENTS

The DoW's Readiness and Environmental Protection Integration (REPI) Program has played a critical role in supporting NB Ventura County's marine testing and training operations. By preserving land surrounding the installation, the REPI Program helps the installation maintain full operational capacity.



PROJECT OVERVIEW

INCOMPATIBLE DEVELOPMENT—10 U.S.C. § 2684A

- NB Ventura County's test and training mission depends on unrestricted access to sea and air ranges and on maintaining Point Mugu's unique marine testing environment.
- Rapid urban growth threatens airfield and waterfront operations, with population increases driving noise complaints, safety concerns, competing air and water traffic, and electromagnetic interference that directly affect testing and training.
- To counter these risks, NB Ventura County used REPI funds under 10 U.S.C. § 2684a to secure restrictive easements that protected high-noise and safety contours, preserved ship-movement corridors, and sustained essential testing conditions and training capacity.





NB VENTURA COUNTY

PROJECT OVERVIEW (CONTINUED)

HABITAT PRESERVATION AND INSTALLATION RESILIENCE —10 U.S.C. § 2684A

- Development surrounding NB Ventura County accelerates habitat loss—particularly coastal sage scrub—and strains water availability, increasing the likelihood of environmental restrictions on operations.
- These pressures jeopardize natural resource management efforts and elevate the risk of regulatory constraints that could limit training, testing, and future mission growth.
- Using authorities under 10 U.S.C. § 2684A, the installation partnered with the REPI Program to secure restrictive easements that restored freshwater flows, preserved critical habitat for six federally listed species, and strengthened long-term mission assurance by reducing regulatory risk.



KEY FISCAL YEAR MILESTONES AT NB VENTURA COUNTY*

2016



NB Ventura County receives REPI funding, establishing the installation's first REPI project.

2019

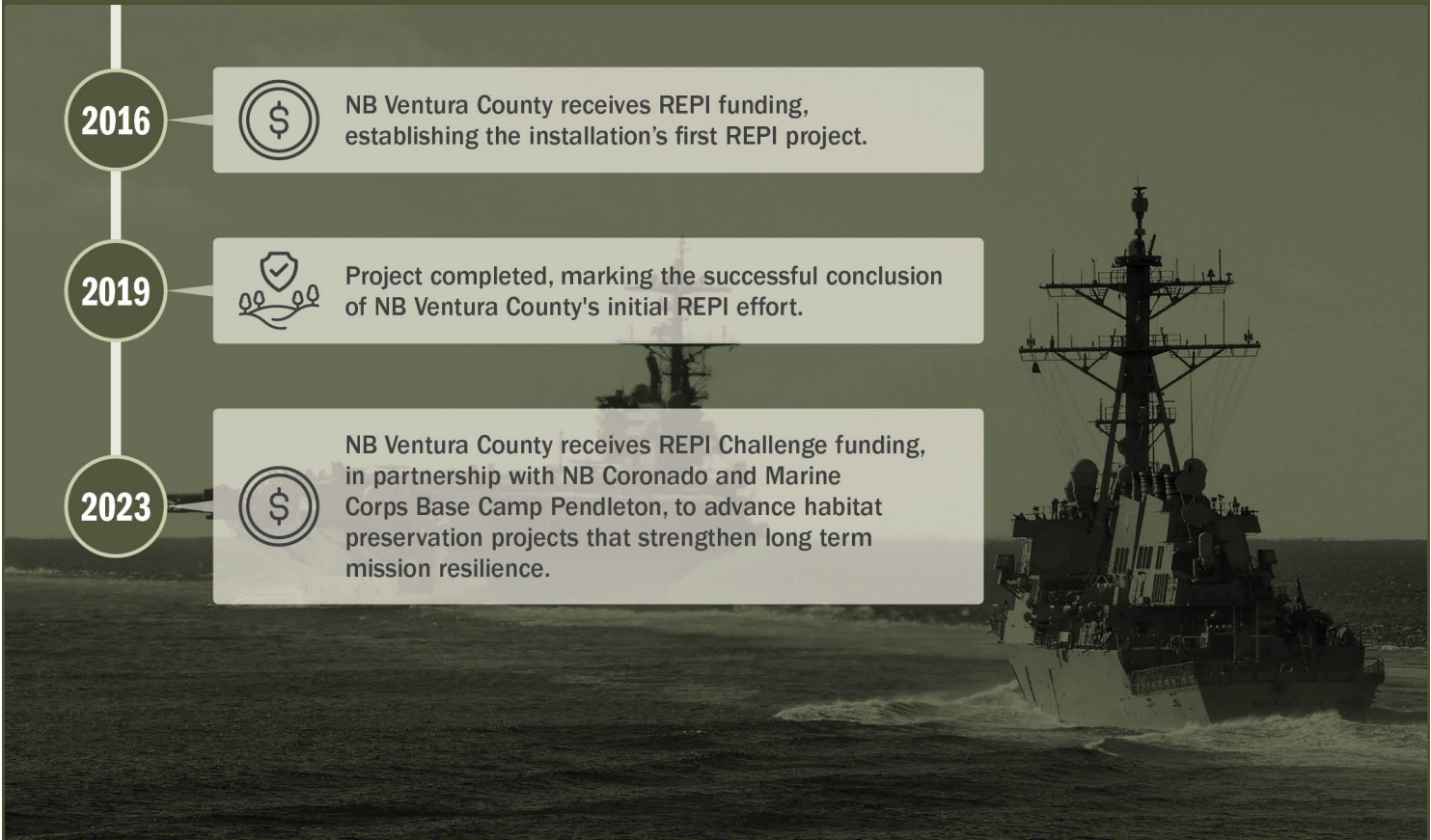


Project completed, marking the successful conclusion of NB Ventura County's initial REPI effort.

2023



NB Ventura County receives REPI Challenge funding, in partnership with NB Coronado and Marine Corps Base Camp Pendleton, to advance habitat preservation projects that strengthen long term mission resilience.



* These milestones demonstrate how the installation is strategically utilizing the REPI Program to mitigate encroachment risks and enhance mission assurance. While not exhaustive, the list highlights the various approaches installations are using to preserve critical testing and training capabilities essential to national defense.



Subscribe to the REPI Program Listserv by scanning the QR code.
For more information about the REPI Program and supportive DoW efforts, please visit www.repi.mil.