



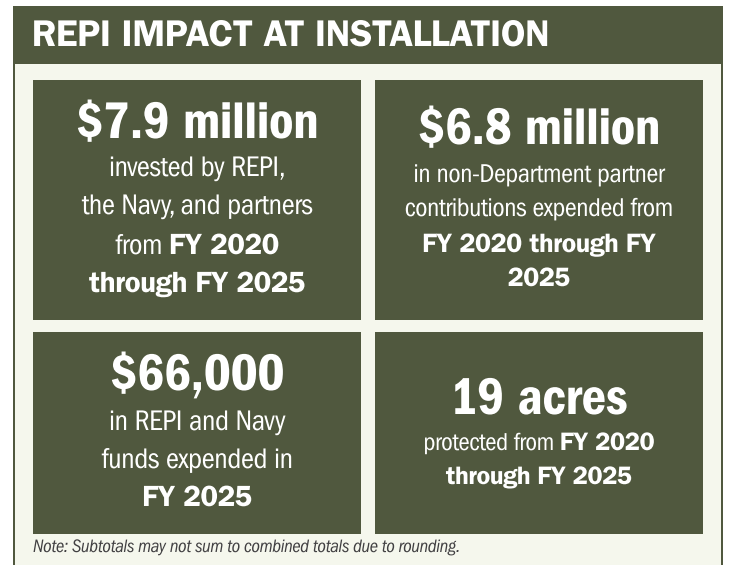
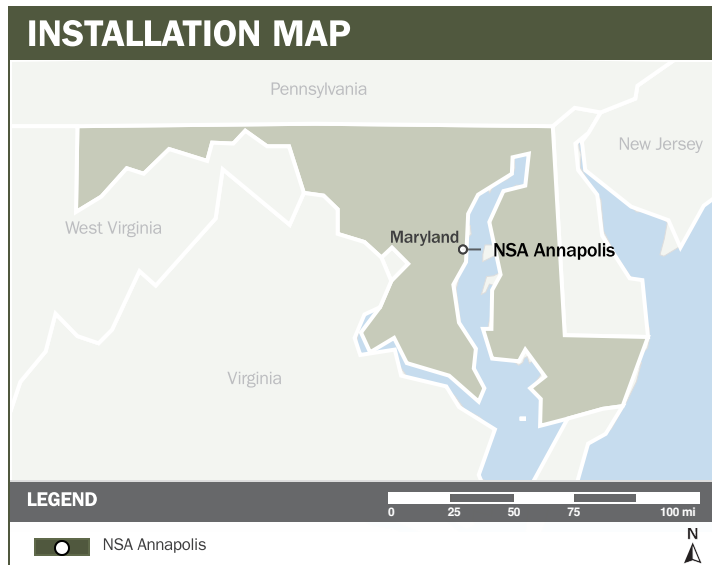
NSA ANNAPOLIS

ABOUT THE INSTALLATION

Naval Support Activity Annapolis (NSAA), located along the Chesapeake Bay in Maryland, hosts the United States Naval Academy (USNA), the Navy’s premier academic institution responsible for training more than 4,400 midshipmen each year for service in a resilient, agile, and combat-ready Joint Force. NSAA also supports the Naval Research Laboratory’s Chesapeake Bay Detachment, which conducts mission-critical research in electronic warfare, materials science, optics, and advanced communications—capabilities that underpin next-generation naval technologies and operational concepts essential to national defense.

STRENGTHENING MISSION READINESS THROUGH REPI INVESTMENTS

The Department of War’s (DoW) Readiness and Environmental Protection Integration (REPI) Program plays a critical role in sustaining NSAA’s operational capabilities and the Navy’s essential technology research. Through targeted land protection and resource management, REPI investments help prevent incompatible development, preserve operational flexibility, and maintain the environmental and training conditions required for the United States Naval Academy to prepare midshipmen for future Joint Force leadership.



PROJECT OVERVIEW

INCOMPATIBLE DEVELOPMENT—10 U.S.C. § 2684A

- NSAA’s national training and research missions rely on uninterrupted access to mission-critical training areas and essential safety-zone buffers.
- Expanding incompatible development and urban growth increase the risk of land-use restrictions, introduce costly operational workarounds, and threaten long-term mission assurance for both USNA and the Naval Research Laboratory.
- To counter these threats, NSAA leverages REPI funds under 10 U.S.C. § 2684a to secure conservation easements adjacent to high-value mission lands preserve operational flexibility and enabling future range relocation or expansion to meet evolving defense requirements.





NSA ANNAPOLIS

PROJECT OVERVIEW (CONTINUED)

INSTALLATION RESILIENCE—10 U.S.C. § 2684A AND 16 U.S.C. § 670c-1

- NSAA faces increasing risks from coastal storms and weather events that drive shoreline erosion and flooding, affecting more than 30% of the installation.
- These hazards jeopardize training continuity, damage essential facilities, and create long-term vulnerabilities that can disrupt missions.
- To strengthen installation resilience, NSAA leverages authorities under 10 U.S.C. § 2684a and 16 U.S.C. § 670c1 to protect undeveloped parcels around the installation—prioritizing pervious land in aquifer-recharge zones—to enhance natural defenses, maintain at-risk mission capabilities, protect shoreline restoration efforts, and bank pre-mitigation credits that support future infrastructure needs.



KEY FISCAL YEAR MILESTONES AT NSA ANNAPOLIS*

2019



NSAA receives REPI funding, launching the installation's first project to protect mission critical training areas and preserve operational flexibility for USNA and naval research activities.

2023



NSAA partners with the City of Annapolis and Anne Arundel County to complete a Military Installation Resilience Review and Resilience Action Plan, establishing a coordinated framework to safeguard critical infrastructure, strengthen coastal resilience, and ensure uninterrupted support to national level training and research missions.

* These milestones demonstrate how the installation is strategically utilizing the REPI Program to mitigate encroachment risks and enhance mission assurance. While not exhaustive, the list highlights the various approaches installations are using to preserve critical testing and training capabilities essential to national defense.



Subscribe to the REPI Program Listserv by scanning the QR code.
For more information about the REPI Program and supportive DoW efforts, please visit www.repi.mil.