



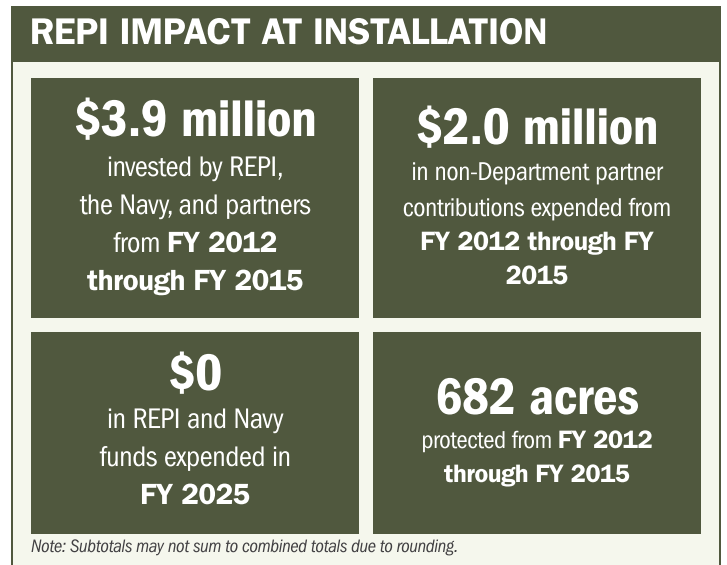
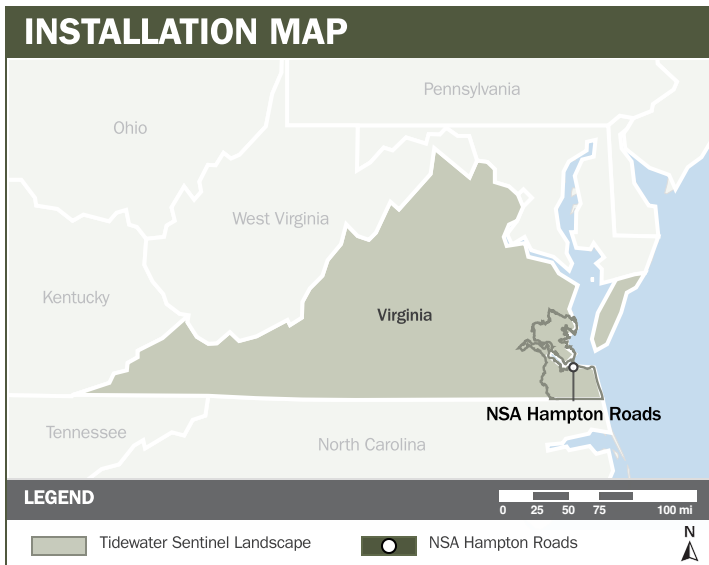
# NSA HAMPTON ROADS

## ABOUT THE INSTALLATION

Naval Support Activity (NSA) Hampton Roads, Northwest Annex is located in southeastern Virginia and within the **Tidewater Sentinel Landscape**. The Northwest Annex provides critical cryptologic information support to the Navy and to other Military Departments and Federal agencies. Surveillance and communications capabilities include the Relocatable-Over-The-Horizon (ROTHR) asset, central to countering narco-terrorism; and the receiver site, which supports nearly 400 radar and sounder antennas, a spectrum monitor, receiver equipment, and acres of ground screen wiring. Northwest Annex’s data-driven mission and capabilities are critical to the Navy and national defense strategies.

## STRENGTHENING MISSION READINESS THROUGH REPI INVESTMENTS

The Department of War’s (DoW) Readiness and Environmental Protection Integration (REPI) Program has helped prevent incompatible development, reduce electromagnetic interference, and sustain ROTHR and other critical capabilities. Through the REPI Program’s strategic partnership, NSA Hampton Roads can protect sensitive facilities and operations for long-term mission sustainment while preserving undeveloped land, regional watersheds, and high-quality habitat for federally listed species.



## PROJECT OVERVIEW

### INCOMPATIBLE DEVELOPMENT—10 U.S.C. § 2684A

- Northwest Annex’s information mission depends on the ability to operate both its transmission and receiver sites, uninterrupted by electromagnetic interference.
- Urban growth and incompatible development including power lines, electrical transmitters and equipment, and industrial operations, all contribute to electromagnetic noise, interfering with military radar and surveillance systems.
- The renewable energy sector has grown significantly, with multiple wind and solar sites collectively creating severe electromagnetic noise and threatening sensitive ROTHR operations that are affected by interference even 5 miles away.





# NSA HAMPTON ROADS

## PROJECT OVERVIEW (CONTINUED)

### INCOMPATIBLE DEVELOPMENT—10 U.S.C. § 2684A

- Furthermore, Northwest Annex has already incurred significant costs to preemptively review, model, and evaluate the electromagnetic impacts of each proposed development project adjacent to the installation.
- To address this threat, NSA Hampton Roads leverages the REPI funds under 10 U.S.C. § 2684a to maintain a workable floor of electromagnetic noise, preserving readiness for ROTHr operations and for other strategic capabilities.
- The effective performance of Northwest Annex’s capabilities depends on a conducive electromagnetic environment; acquiring restrictive and conservation easements within the 5-mile region of influence protects sensitive facilities and operations for long-term mission sustainment and preserves undeveloped land, regional watersheds, and high-quality habitat for federally listed species.



## KEY FISCAL YEAR MILESTONES AT NSA HAMPTON ROADS\*

2012

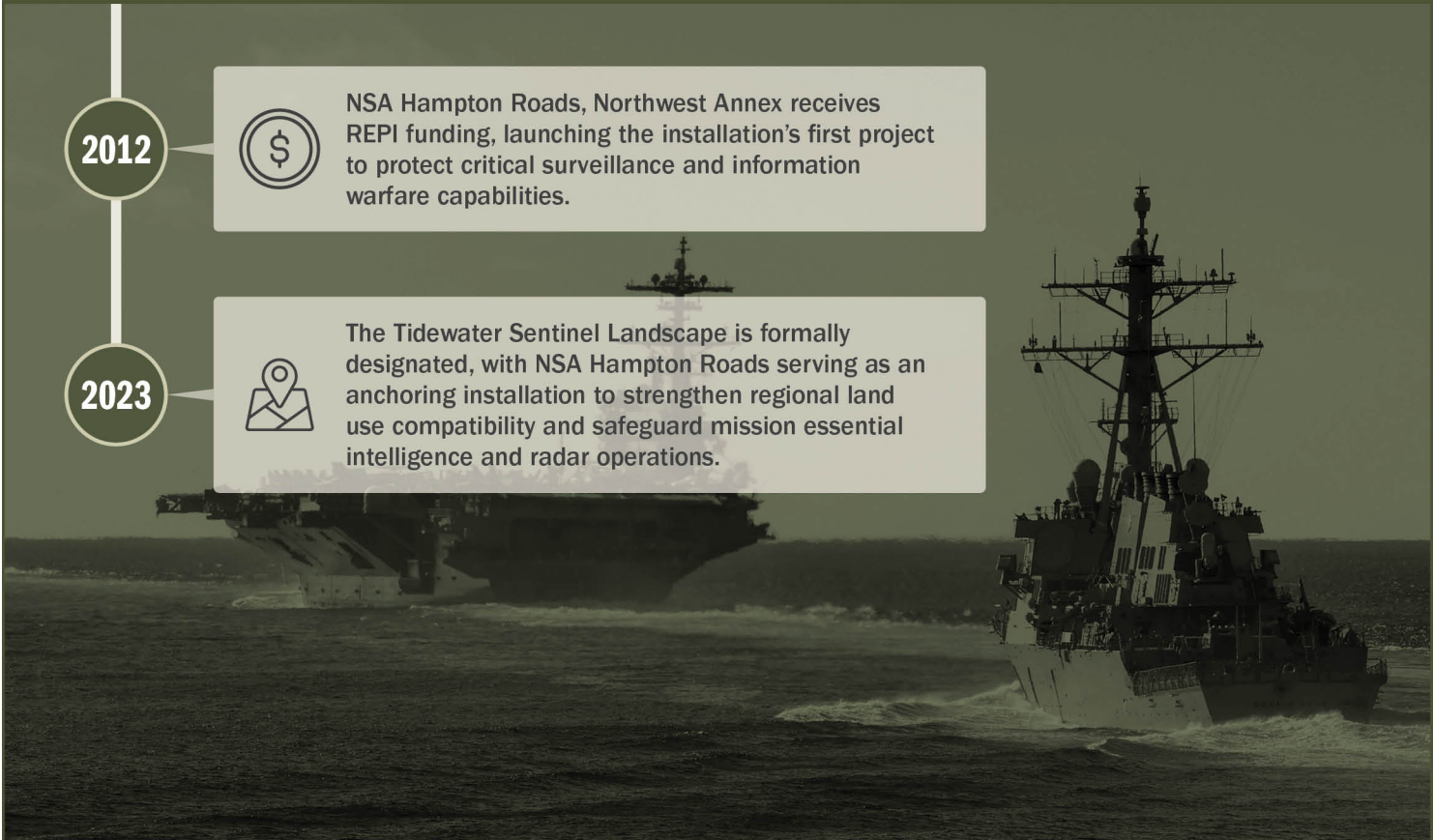


NSA Hampton Roads, Northwest Annex receives REPI funding, launching the installation’s first project to protect critical surveillance and information warfare capabilities.

2023



The Tidewater Sentinel Landscape is formally designated, with NSA Hampton Roads serving as an anchoring installation to strengthen regional land use compatibility and safeguard mission essential intelligence and radar operations.



\* These milestones demonstrate how the installation is strategically utilizing the REPI Program to mitigate encroachment risks and enhance mission assurance. While not exhaustive, the list highlights the various approaches installations are using to preserve critical testing and training capabilities essential to national defense.



Subscribe to the REPI Program Listserv by scanning the QR code.  
For more information about the REPI Program and supportive DoW efforts, please visit [www.repi.mil](http://www.repi.mil).