



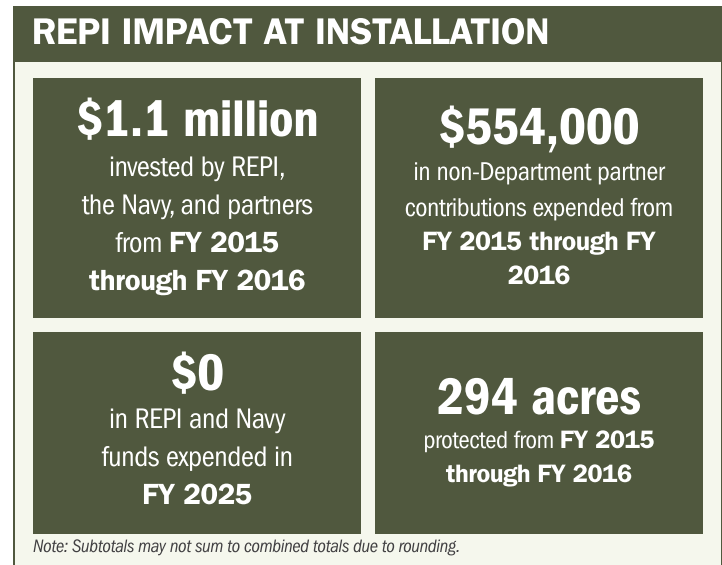
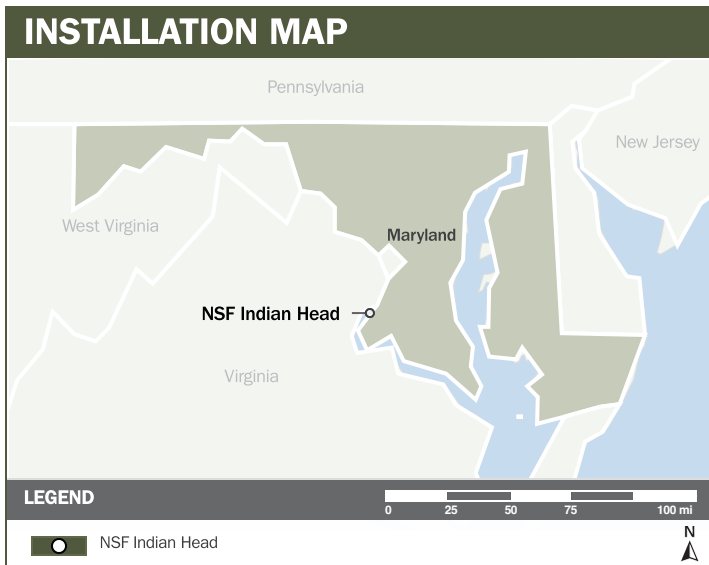
# NSF INDIAN HEAD

## ABOUT THE INSTALLATION

Naval Support Facility (NSF) Indian Head and its Stump Neck Annex sit along the Potomac River in Maryland and support six major commands, including the Naval Surface Warfare Center Indian Head Division (NSWC/IHD) and the Naval Explosive Ordnance Disposal Technology Division. The installation is the Navy's premier site for the research, development, testing, and evaluation of energetic materials used in warheads, propulsion systems, and ordnance. It houses the Department of War's (DoW) largest full-spectrum energetics complex and the world's most concentrated explosive ordnance disposal technology and capability, making NSF Indian Head a cornerstone of the nation's weapons development and EOD enterprise.

## STRENGTHENING MISSION READINESS THROUGH REPI INVESTMENTS

The DoW's Readiness and Environmental Protection Integration (REPI) Program played a critical role in supporting NSF Indian Head's efforts to prevent incompatible development, preserve training flexibility, and sustain critical live-fire ranges and overwater testing capabilities. As mission demands evolve and systems-development requirements accelerate, REPI investments have become essential to preserving the installation's ability to support current and next-generation defense capabilities.



## PROJECT OVERVIEW

### INCOMPATIBLE DEVELOPMENT—10 U.S.C. § 2684A

- NSF Indian Head's geographic isolation is essential to its energetics RDT&E mission, providing the safety buffers required for outdoor and overwater explosive and propellant testing.
- Residential growth and incompatible land use near testing sites threaten these operations, increasing exposure to noise, vibration, and blast effects that could trigger complaints, legal challenges, and public-safety concerns.
- To address this threat, NSF Indian Head leveraged REPI Program funds under 10 U.S.C. § 2684a to protect crucial safety zones and conservation buffers around testing ranges, minimizing noise complaints and safety concerns.





# NSF INDIAN HEAD

## KEY FISCAL YEAR MILESTONES AT NSF INDIAN HEAD\*

2015



NSF Indian Head receives REPI funding, launching the installation's first project to protect critical energetics testing and RDT&E capabilities.

2016



The NSF Indian Head Joint Land Use Study is completed with Charles County, leading the county to update its Comprehensive Plan to require installation review of proposed development within the Military Awareness Area—strengthening long term mission compatibility.

2021



In partnership with Charles County, NSF Indian Head initiates the Regional Resilience Planning Project to address infrastructure vulnerabilities and enhance mission assurance across the installation and surrounding community.

\* These milestones demonstrate how the installation is strategically utilizing the REPI Program to mitigate encroachment risks and enhance mission assurance. While not exhaustive, the list highlights the various approaches installations are using to preserve critical testing and training capabilities essential to national defense.



Subscribe to the REPI Program Listserv by scanning the QR code.  
For more information about the REPI Program and supportive DoW efforts, please visit [www.repi.mil](http://www.repi.mil).