



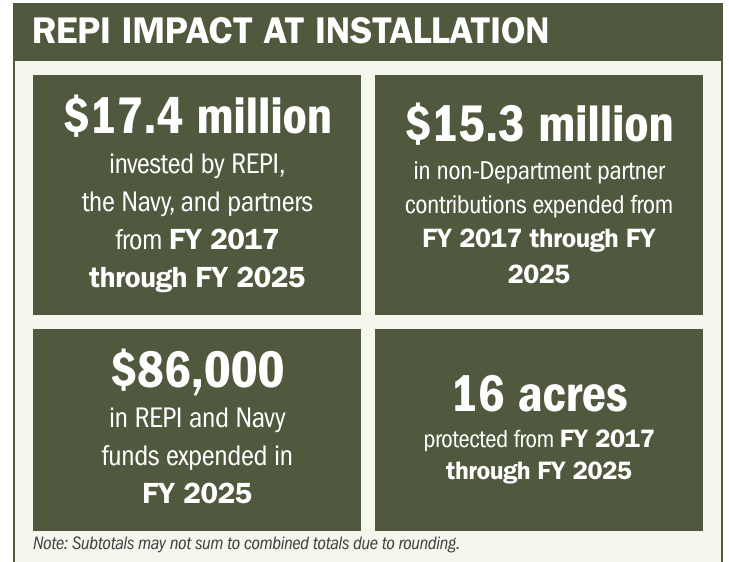
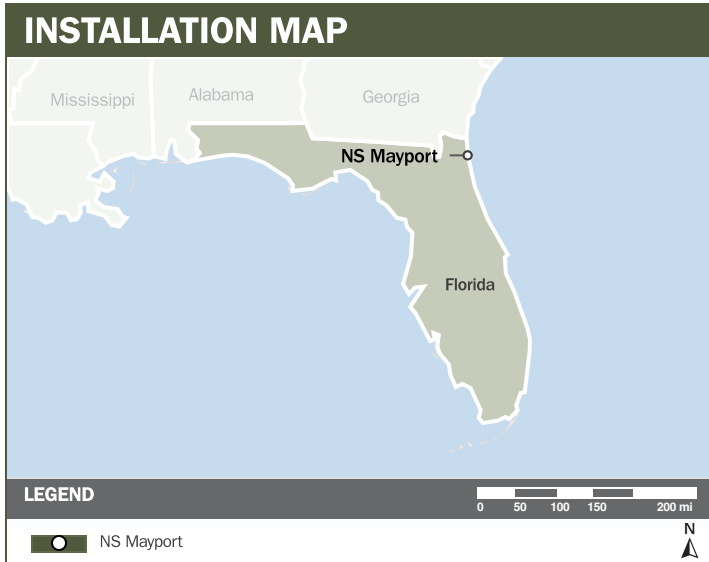
# NS MAYPORT

## ABOUT THE INSTALLATION

Naval Station (NS) Mayport is strategically located at the confluence of the St. Johns River and the Atlantic Ocean in Florida. The installation headquarters the U.S. Fourth Fleet and the Naval Southern Command and is the primary facility for support, maintenance, and training in the Southeast. Its 8,000-foot runway and support and Department of War (DoW) aircraft, including Maritime Strike helicopters and unmanned aerial vehicles, and its protected harbor can accommodate over 30 aircraft carrier ships. NS Mayport facilitates 2,100 ship movements and over 84,000 sorties annually.

## STRENGTHENING MISSION READINESS THROUGH REPI INVESTMENTS

The DoW's Readiness and Environmental Protection Integration (REPI) Program has played a critical role in preventing incompatible development and fence-line encroachment, directly sustaining critical port, airfield, and divert capabilities. With its expanded emphasis on installation resilience, the REPI Program also strengthens the protection of mission-essential infrastructure against emerging threats.



## PROJECT OVERVIEW

### INCOMPATIBLE DEVELOPMENT—10 U.S.C. § 2684A

- NS Mayport's operations depend on unrestricted use of its deep-draft port, airfield and runway, and carrier divert capabilities, all essential to fleet training and operational readiness.
- High-density residential growth around the installation threatens these capabilities, pushing incompatible development into the Accident Potential Zone and generating safety concerns, noise complaints, and traffic that disrupts training and operations.
- To counter these risks, NS Mayport leverages REPI funds under 10 U.S.C. § 2684a to protect the Accident Potential Zone, high-noise contours north of the station, and strategic assets needed for carrier and airborne operations, preserving long-term mission flexibility.





# NS MAYPORT

## PROJECT OVERVIEW (CONTINUED)

### INSTALLATION RESILIENCE – SIKES ACT—16 U.S.C. § 670C-1

- Incompatible development around NS Mayport accelerates habitat loss, increases commercial water activity, and worsens coastal and inland flooding, all of which threaten access to installation facilities, lands, and critical infrastructure.
- These impacts have already caused more than \$40 million in damages, underscoring the urgency of resilience measures.
- Using authority under 16 U.S.C. § 670c1, NS Mayport is implementing two living shoreline projects to reduce coastal erosion, mitigate flooding, and strengthen the installation’s ability to withstand severe weather and environmental stressors.



## KEY FISCAL YEAR MILESTONES AT NS MAYPORT\*

2016



NS Mayport receives REPI funding, establishing the installation’s first REPI project to protect mission critical aviation and port operations.

2022



The North Florida Land Trust joins the multi year Encroachment Protection Agreement, expanding regional capacity to address incompatible development and strengthen mission assurance.



\* These milestones demonstrate how the installation is strategically utilizing the REPI Program to mitigate encroachment risks and enhance mission assurance. While not exhaustive, the list highlights the various approaches installations are using to preserve critical testing and training capabilities essential to national defense.



Subscribe to the REPI Program Listserv by scanning the QR code.  
For more information about the REPI Program and supportive DoW efforts, please visit [www.repi.mil](http://www.repi.mil).