



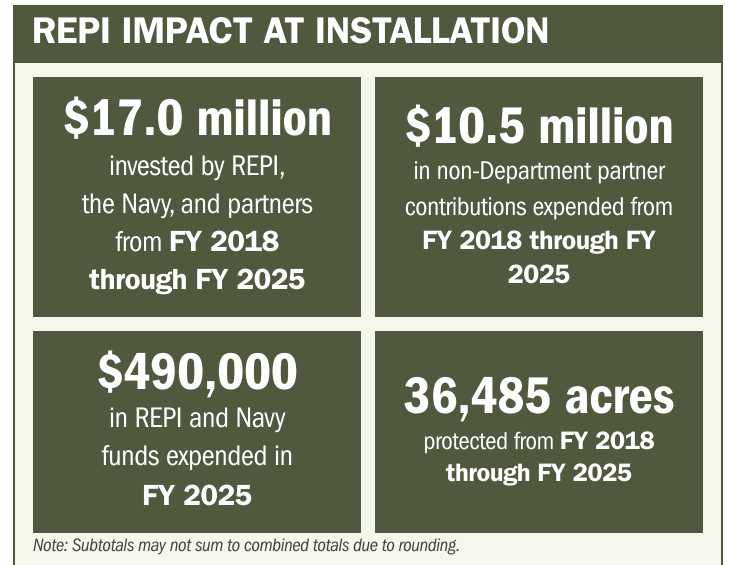
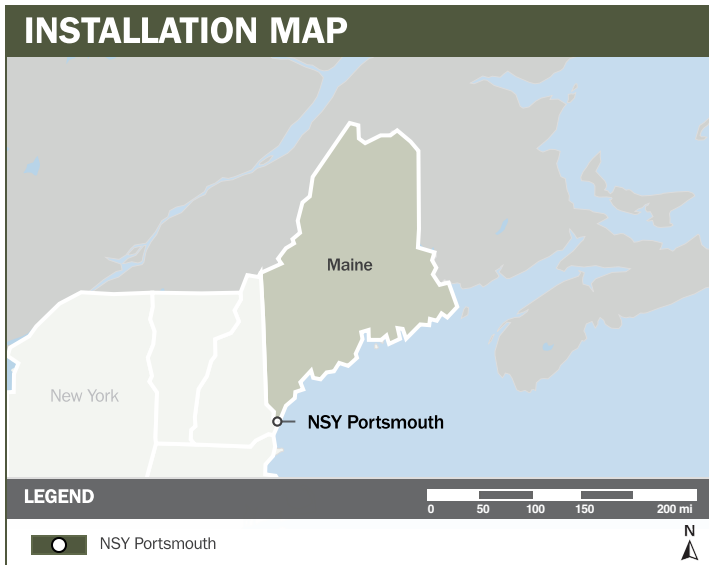
NSY PORTSMOUTH

ABOUT THE INSTALLATION

The Survival, Evasion, Resistance, and Escape (SERE) School at Naval Shipyard (NSY) Portsmouth is located in southeastern Maine. A branch of the Naval Education and Training Command's Center for Security Forces, the SERE School's highly critical mission provides training to military personnel at high risk of capture. Two training locations provide both academic and cold weather field survival training essential to a resilient joint force and defense ecosystem, effectively training students in order to save lives and safeguard national security.

STRENGTHENING MISSION READINESS THROUGH REPI INVESTMENTS

The Department of War's (DoW) Readiness and Environmental Protection Integration (REPI) Program has played a critical role in supporting the SERE School's long-term operational success. Through strategic land conservation and partnership-driven investments, REPI funding has helped protect unrestricted, unimpeded access to SERE School's isolated field training site.



PROJECT OVERVIEW

INCOMPATIBLE DEVELOPMENT—10 U.S.C. § 2684A

- The SERE School's national-level training mission depends on unrestricted access to an isolated field training environment, where remote wilderness conditions and an insulated auditory landscape are essential for realistic survival, evasion, resistance, and escape instruction.
- Residential and commercial development, along with expanding energy-production facilities, threaten this isolation, degrading the wilderness viewshed, increasing noise intrusion, elevating trespass risks, and undermining operational security.
- To counter these threats, NSY Portsmouth leverages REPI funds under 10 U.S.C. § 2684a to protect the critical isolation of SERE training lands, reducing operational workarounds and preserving the installation's ability to prepare forces with the resilience and adaptability required for emerging threats.

A photograph showing a winter scene in a forest. The ground is covered in snow, and several people are visible in the distance, some appearing to be engaged in outdoor activities or training. The trees are mostly bare, with some evergreens visible.



NSY PORTSMOUTH

PROJECT OVERVIEW (CONTINUED)

HABITAT PRESERVATION—10 U.S.C. § 2684A

- Medium and high-intensity development near the SERE School increases habitat loss, wildfire risk, and ecosystem degradation, threatening the integrity of training lands and the realism of field exercises.
- These environmental pressures jeopardize long-term mission sustainment, reducing the availability of secure, undeveloped terrain essential for SERE training.
- Using authority under 10 U.S.C. § 2684a, the installation preserves wildlife habitat and implements sustainable forest management across a cohesive on and off-installation buffer, strengthening installation resilience and ensuring enduring training capability.



KEY FISCAL YEAR MILESTONES AT NSY PORTSMOUTH SERE SCHOOL*

2015

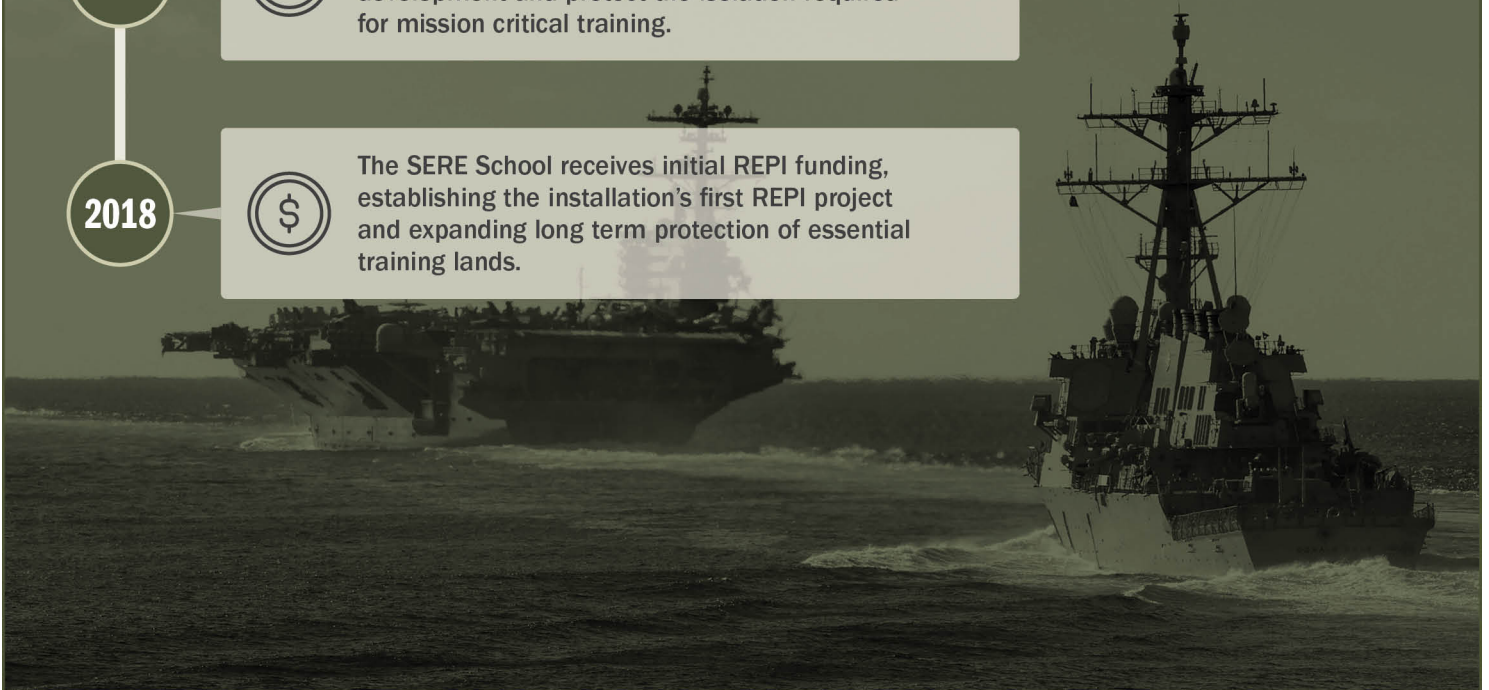


NSY Portsmouth SERE School receives REPI Challenge funding to restrict incompatible development and protect the isolation required for mission critical training.

2018



The SERE School receives initial REPI funding, establishing the installation's first REPI project and expanding long term protection of essential training lands.



* These milestones demonstrate how the installation is strategically utilizing the REPI Program to mitigate encroachment risks and enhance mission assurance. While not exhaustive, the list highlights the various approaches installations are using to preserve critical testing and training capabilities essential to national defense.



Subscribe to the REPI Program Listserv by scanning the QR code.
For more information about the REPI Program and supportive DoW efforts, please visit www.repi.mil.