



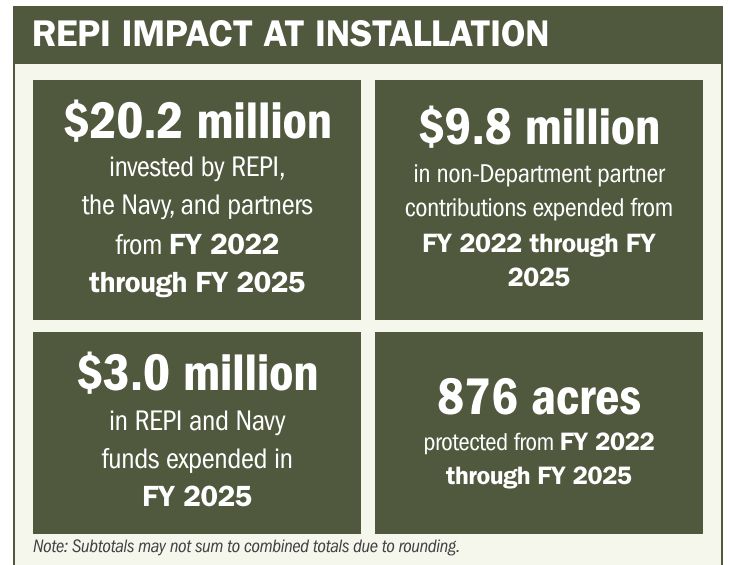
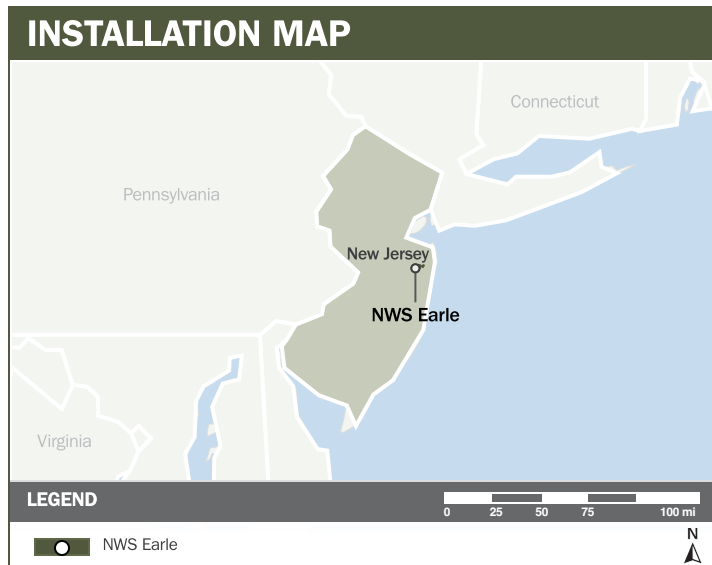
NWS EARLE

ABOUT THE INSTALLATION

Naval Weapons Station (NWS) Earle, located in New Jersey, is home to the Navy’s longest Pier Complex, a 2.9-mile-long ammunition loading facility surrounded by a 5-mile Marine Security Zone. The pier also supports the Navy’s largest explosive capacity. NWS Earle’s critical mission of delivering ammunition to the Pier Complex is facilitated by a 9,000-acre ordnance storage area, 100 miles of railroad track for rapid ammunition transit, and an explosive ordnance training and disposal range. These strategic assets supply Atlantic Fleet strike groups and are essential for force projection and homeland defense.

STRENGTHENING MISSION READINESS THROUGH REPI INVESTMENTS

The Department of War’s (DoW) Readiness and Environmental Protection Integration (REPI) Program has played a critical role in supporting NWS Earle’s long-term operational success. Through strategic land acquisition and management and ecosystem restoration, REPI funding has helped prevent incompatible development near the Pier Complex to avoid trespass and security risks and crowding, safety, and noise concerns along ammunition transit routes, near the complex, and within explosive safety zones.



PROJECT OVERVIEW

INCOMPATIBLE DEVELOPMENT—10 U.S.C. § 2684A

- NWS Earle’s ammunition supply mission depends on the safety, security, and readiness of its strategic assets, including uninterrupted use of its inland supply route and waterfront Pier Complex.
- Expanding development around the installation, its transit corridor, and the waterfront threatens rapid movement of ordnance and unimpeded pier operations, increasing risks to public safety and operational security.
- To counter these threats, NWS Earle is leveraging REPI funds under 10 U.S.C. § 2684a to safeguard key transit corridors, reduce public-exposure risks within explosive safety quantity-distance arcs, and preserve full mission capability and fleet readiness.





NWS EARLE

PROJECT OVERVIEW (CONTINUED)

INSTALLATION RESILIENCE—10 U.S.C. § 2684A; 16 U.S.C. § 670C-1; 10 U.S.C. § 2679

- Urban development inland and along the coast increases impervious surfaces, intensifying storm-surge flooding, degrading natural drainage systems, elevating wildfire risk around NWS Earle.
- These weather-driven impacts threaten critical infrastructure and utilities, hindering ship-loading operations and reducing deployment readiness.
- Using multiple authorities, this REPI project reduces impervious surface coverage and restores regional watersheds and saltmarsh systems, improving water quality, protecting local water supply, mitigating wildfire risk, and increasing storm-surge resistance and flood-storage capacity across the installation.



KEY FISCAL YEAR MILESTONES AT NWS EARLE*

2018



NWS Earle receives REPI funding, launching the installation's first project to protect critical ammunition supply corridors and explosive safety buffers.

2020



NWS Earle receives REPI Challenge funding for wildfire resilience projects under 10 U.S.C. § 2679, supporting landscape scale risk reduction across multiple New Jersey military installations.

2023



Additional REPI Challenge funding is awarded to the New Jersey Department of Environmental Protection for regional wildfire resilience projects benefiting multiple installations, including NWS Earle.

* These milestones demonstrate how the installation is strategically utilizing the REPI Program to mitigate encroachment risks and enhance mission assurance. While not exhaustive, the list highlights the various approaches installations are using to preserve critical testing and training capabilities essential to national defense.



Subscribe to the REPI Program Listserv by scanning the QR code.
For more information about the REPI Program and supportive DoW efforts, please visit www.repi.mil.