



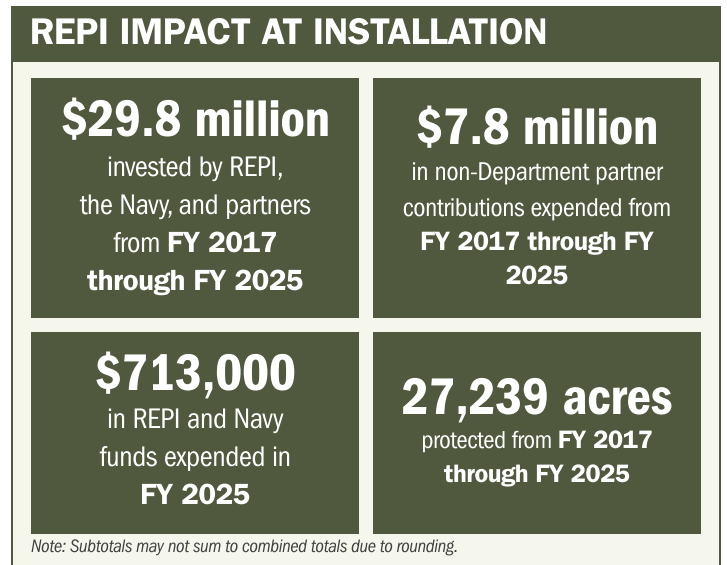
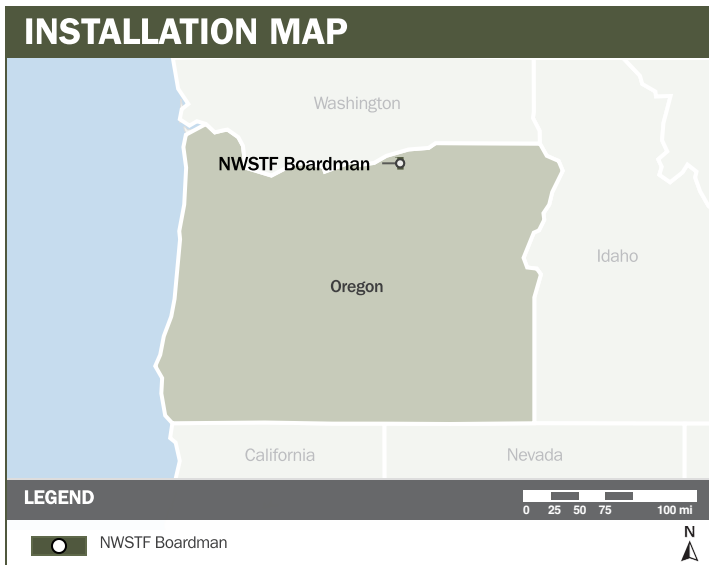
# NWSTF BOARDMAN

## ABOUT THE INSTALLATION

Naval Weapons Systems Training Facility (NWSTF) Boardman is located in northern Oregon along the Columbia River. The 47,000-acre installation hosts a vital combination of land and restricted airspace that supports training and testing ranges and routes, military operations, and low-altitude tactical exercises for the EA-18G airborne electronic attack aircraft. These strategic assets are critical to mission-essential unmanned aircraft low-altitude terrain tactics, aerial bombing, radar operations, and training ranges. NWSTF Boardman's irreplaceable training, operating, and testing activities, capacities, and facilities are essential to Naval and joint services operational readiness.

## STRENGTHENING MISSION READINESS THROUGH REPI INVESTMENTS

The Department of War's (DoW) Readiness and Environmental Protection Integration (REPI) Program has played a key role in supporting NWSTF Boardman's training airspace, low-altitude flights, and mission-critical radar operations. By preventing additional incompatible renewable energy development around the installation, the REPI Program helps protect essential training, testing, and operating areas to ensure long-term installation resiliency.



## PROJECT OVERVIEW

### INCOMPATIBLE DEVELOPMENT—10 U.S.C. § 2684A

- NWSTF Boardman's national training and readiness mission depends on unrestricted access to airspace and expansive ground and air-to-ground training ranges, which support low-altitude tactical flight, ordnance testing, and maneuver training.
- Incompatible development, particularly largescale wind energy and transmission infrastructure, creates vertical obstructions that compromise low-altitude tactical training, forcing avoidance maneuvers, reducing training realism, and at times requiring pilots to terminate critical sorties.



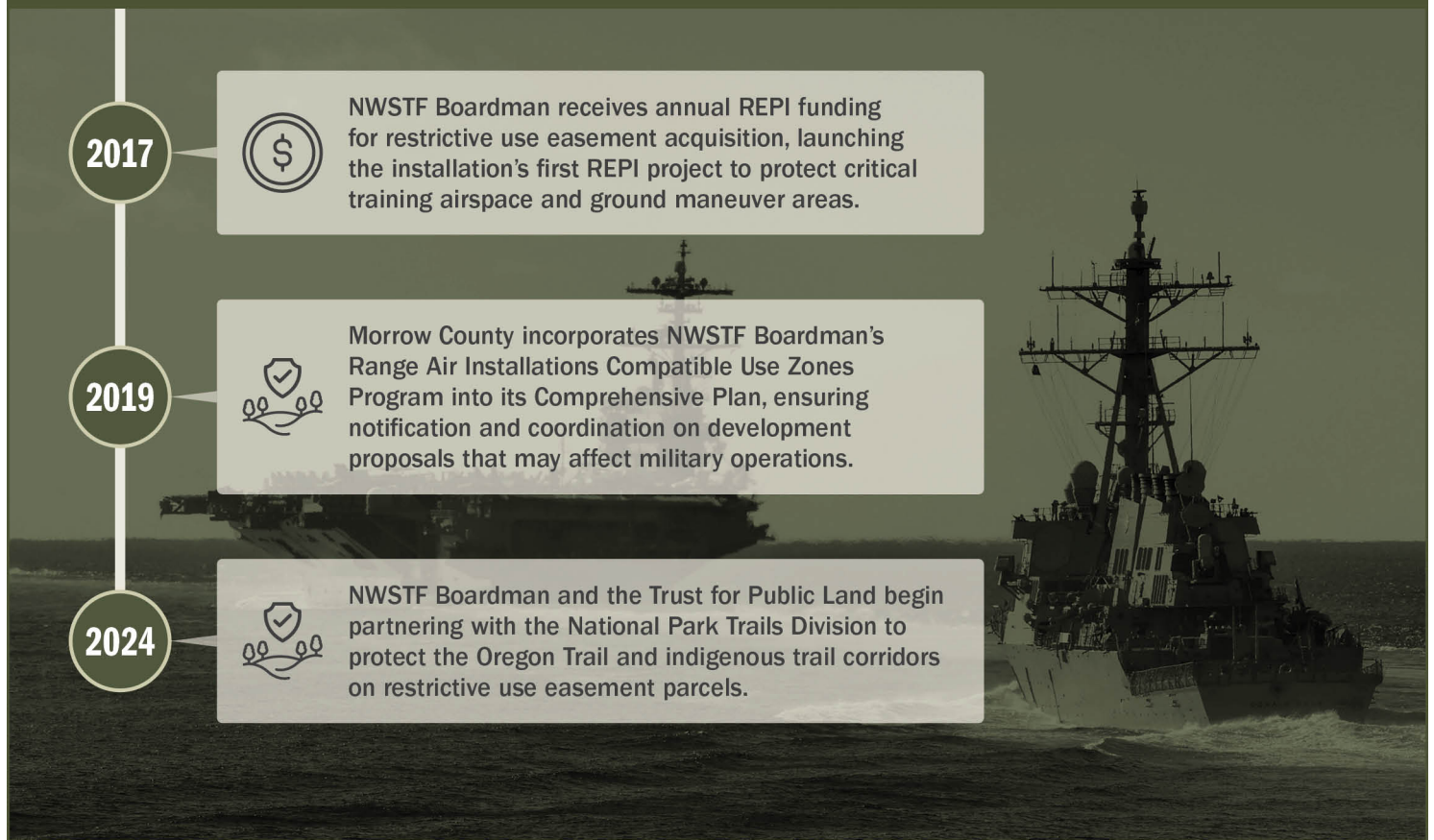


# NWSTF BOARDMAN

## PROJECT OVERVIEW (CONTINUED)

- To address these threats, NWSTF Boardman is leveraging REPI Program funds under 10 U.S.C. § 2684a to protect key airborne, air-to-ground, and ground training operations and water conservation, wildfire prevention, and habitat preservation for federally listed species.

## KEY FISCAL YEAR MILESTONES AT NWSTF BOARDMAN\*



\* These milestones demonstrate how the installation is strategically utilizing the REPI Program to mitigate encroachment risks and enhance mission assurance. While not exhaustive, the list highlights the various approaches installations are using to preserve critical testing and training capabilities essential to national defense.



Subscribe to the REPI Program Listserv by scanning the QR code.  
For more information about the REPI Program and supportive DoW efforts, please visit [www.repi.mil](http://www.repi.mil).