



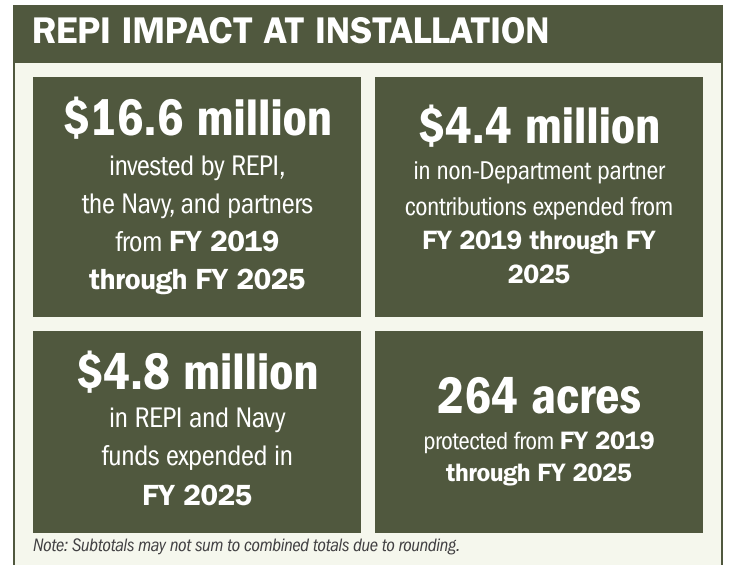
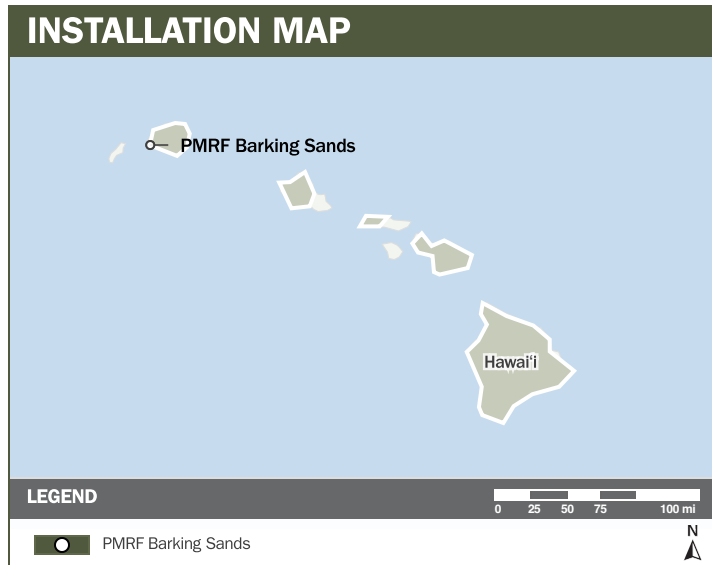
PMRF BARKING SANDS

ABOUT THE INSTALLATION

The U.S. Navy's Pacific Missile Range Facility Barking Sands (PMRF), located along the west coast of Kaua'i Island, is the world's largest instrumented multi-environment range. PMRF provides premier training and testing capabilities within an 1,100-square nautical mile instrumented underwater range; 42,000 square nautical miles of airspace; and, when needed, up to 2.1 million square nautical miles of operating space. PMRF is capable of simultaneously supporting surface, subsurface, air, and space operations.

STRENGTHENING MISSION READINESS THROUGH REPI INVESTMENTS

The Department of War's (DoW) Readiness and Environmental Protection Integration (REPI) Program has played a critical role in supporting PMRF's long-term operational success. Through partnership-driven investments in installation resilience, natural resource management, and habitat preservation, REPI funding has helped sustain training flexibility and critical capabilities beyond the installation boundary.



PROJECT OVERVIEW

INSTALLATION RESILIENCE—16 U.S.C. § 670c-1

- PMRF's national defense mission depends on its unique testing and training environment and coastal capabilities but is threatened by coastal inundation with erosion rates of ten feet per year, flooding impacts, and severe wildfire risks.
- PMRF is located in a high wildland fire risk area and outlying areas of Kōke'e, Makaha, and Miloli'i Ridges are in remote areas where emergency response is delayed. Further, invasive plant species in upland watersheds and lack of open floodable space on the Mānā Plain impact flooding and groundwater recharge.
- To address these threats, PMRF is leveraging REPI Program funds under 16 U.S.C. § 670c-1 to increase installation resilience, protecting vital radar and telemetry equipment exposed to wildland fire, mitigate erosion and flooding, and replenish surface and groundwater.





PMRF BARKING SANDS

PROJECT OVERVIEW (CONTINUED)

HABITAT PRESERVATION—16 U.S.C. § 670c-1

- Presence of threatened and endangered species in and around the base pose direct impacts to species' conservation status as well as impacts to air operations and range/base operational capabilities. Regular seabird monitoring and protection is required to ensure habitat/species protection and limited disruptions to mission capabilities.
- Leveraging authority under 16 U.S.C. § 670c-1, this initiative builds upon PMRF's proven conservation record of migratory birds, including Newell's shearwaters, Hawaiian Petrels, and Band-rumped storm petrels. The project also ensures the installation can prevent Bird/Wildlife Aircraft Strike Hazard (BASH) incidents, minimizing risks to aircraft and mission disruptions.
- By proactively preventing environmental degradation, PMRF avoids regulatory training restrictions that could otherwise halt testing, training, and operations.



KEY FISCAL YEAR MILESTONES AT PACIFIC MISSILE RANGE FACILITY BARKING SANDS*

2016



PMRF instituted a "Dark Skies" program involving turning off all non-essential lighting on the base and modifying nighttime operations between September 15 and December 15 of each year to protect endemic seabirds during nocturnal flight. Since the program's inception, the number of fallen seabirds at PMRF has decreased significantly and has expanded to community outreach and annual trainings to improve data gathering for conservation efforts.

2022



PMRF secured its first REPI Challenge project in partnership with Kekaha Agricultural Association to enhance installation resilience and protect adjacent agricultural land on the Mānā Plain of West Kaua'i by creating open floodable space.

2024



In partnership with the State of Hawai'i Department of Land and Natural Resources and the National Fish and Wildlife Foundation, PMRF completed the Honopu'u Valley project to improve baseline ecological conditions of federally listed, endemic seabirds.

2024



The Hawai'i Sentinel Landscape, spanning over two million acres, is formally designated, and includes PMRF as a key installation.

* These milestones demonstrate how the installation is strategically utilizing the REPI Program to mitigate encroachment risks and enhance mission assurance. While not exhaustive, the list highlights the various approaches installations are using to preserve critical testing and training capabilities essential to national defense.



Subscribe to the REPI Program Listserv by scanning the QR code.

For more information about the REPI Program and supportive DoW efforts, please visit www.repi.mil.