



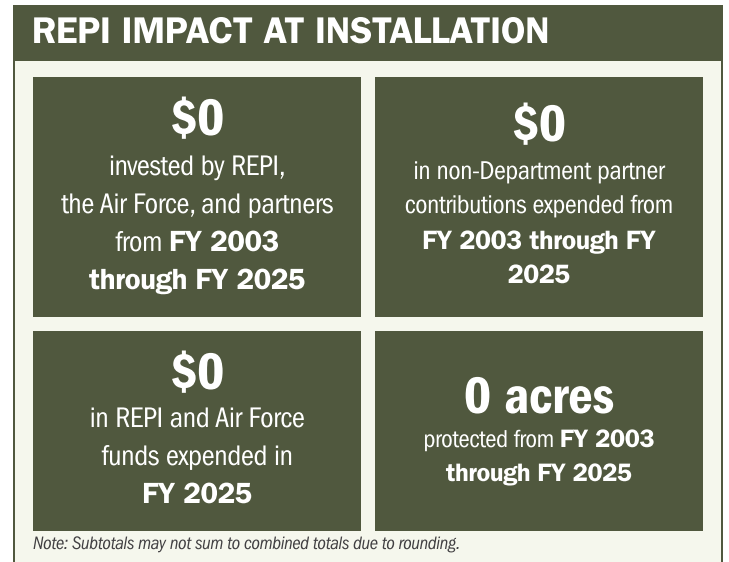
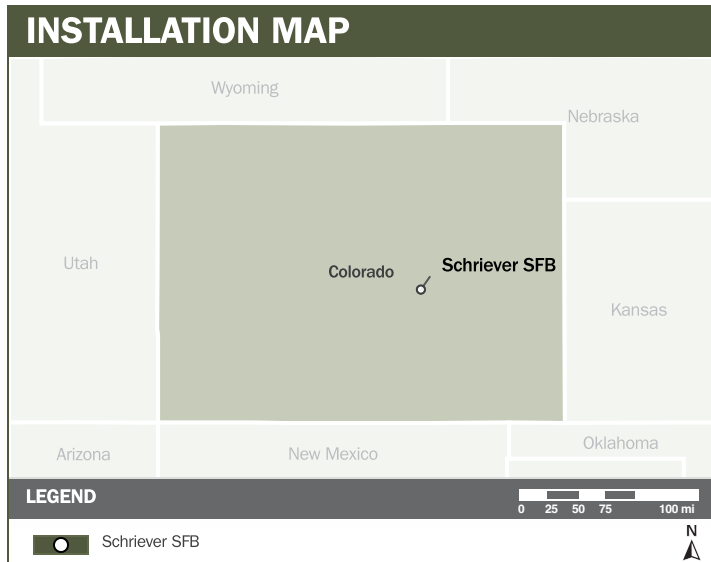
SCHRIEVER SFB

ABOUT THE INSTALLATION

Located in rural El Paso County, Schriever Space Force Base (SFB) plays a critical role in supporting a wide range of national security space missions. The installation enables uninterrupted communication between ground terminal antennas and satellites and hosts more than 20 space and cyberspace mission partners. Schriever SFB's mission ensures information advantage, preserves command and control systems, and supports essential detection, tracking, and targeting operations across the space enterprise.

STRENGTHENING MISSION READINESS THROUGH REPI INVESTMENTS

The Department of War's (DoW) Readiness and Environmental Protection Integration (REPI) Program safeguards the protection of satellite communications antenna operations, scheduling, testing, and maintenance activities at Schriever SFB. Daily telemetry, tracking, and commanding functions are essential to sustaining critical space mission systems. REPI investments help safeguard satellite operations centers and other command and control facilities that monitor satellite launch, positioning, orbit, and disposition—capabilities foundational to national security space operations.



PROJECT OVERVIEW

INCOMPATIBLE DEVELOPMENT—10 U.S.C. § 2684A

- Schriever SFB faces encroachment risks from spectrum interference and increased observability (OPSEC concerns), both of which can disrupt critical satellite communications missions.
- New industrial or suburban residential development north of the installation increases the likelihood of electromagnetic interference and operational impacts.
- REPI acquisitions under 10 U.S.C. § 2684A will help protect all installation missions, including assured access to space through the global Satellite Control Network (SCN) and defensive cyberspace capabilities supporting space mission systems.





SCHRIEVER SFB

PROJECT OVERVIEW (CONTINUED)

NATURAL RESOURCES MANAGEMENT—10 U.S.C. § 2684A

- Increased development near Schriever SFB is expected to create more impervious surfaces, contributing to more intense stormwater runoff and flooding events.
- These conditions elevate the risk of damage to critical infrastructure, including transportation routes, security facilities, and utility systems.
- To mitigate these impacts, the installation is leveraging REPI funding under 10 U.S.C. § 2684A to reduce future flood risks and prevent disruptions to mission critical operations.



KEY FISCAL YEAR MILESTONES AT SCHRIEVER SFB*

2024



Schriever SFB receives REPI funding, initiating the first REPI project at the installation to protect mission critical satellite and space operations.

2025



The installation received REPI Challenge funding for the Optimizing Resilience for Colorado Springs Installations and Communities project to increase installation resilience.

* These milestones demonstrate how the installation is strategically utilizing the REPI Program to mitigate encroachment risks and enhance mission assurance. While not exhaustive, the list highlights the various approaches installations are using to preserve critical testing and training capabilities essential to national defense.



Subscribe to the REPI Program Listserv by scanning the QR code.
For more information about the REPI Program and supportive DoW efforts, please visit www.repi.mil.