



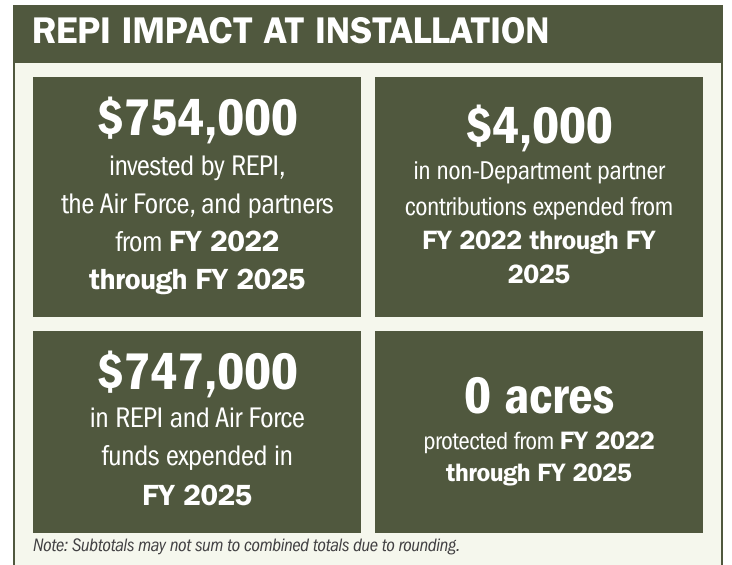
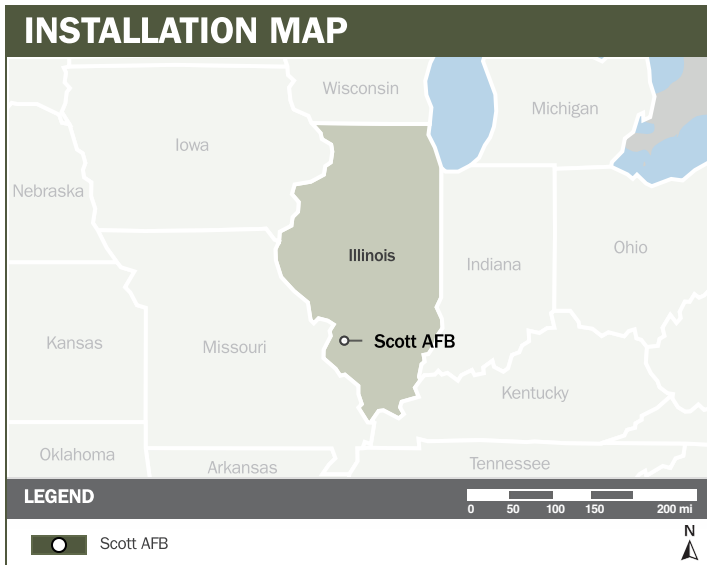
# SCOTT AFB

## ABOUT THE INSTALLATION

Located just outside of St. Louis, Missouri, Scott Air Force Base (AFB) is home to the 375th Air Mobility Wing and serves as headquarters to several commands and operational units. The 375th Air Mobility Wing conducts air mobility operations and maintains a fleet of C-21A aircraft. In partnership with the 932nd Airlift Wing and the 126th Air Refueling Wing, the installation operates KC-135 and C-40 aircraft, enabling all three core Air Mobility Command mission sets: airlift, air refueling, and aeromedical evacuation.

## STRENGTHENING MISSION READINESS THROUGH REPI INVESTMENTS

The Department of War's (DoW) Readiness and Environmental Protection Integration (REPI) Program supports Scott AFB's ability to sustain mission critical operations that are increasingly threatened by regional flooding. REPI investments will establish off installation conservation easements to expand stormwater storage capacity and reduce flood impacts on the installation.



## PROJECT OVERVIEW

- INCOMPATIBLE DEVELOPMENT—10 U.S.C. § 2684A**
- Scott AFB's flying mission capabilities, as well as other tenant mission capabilities, are severely impacted during recurring flooding events.
  - Flooding shuts down all air mobility exercises and missions and forces non-essential personnel to evacuate. Additional development and storm events across the area are expected to lead to more frequent floodplain inundation. These threats will expand the area available for waterfowl habitation for extended periods, thereby increasing risk to mission execution and personnel due to a higher likelihood of Bird Aircraft Strike Hazard incidents.
  - To combat these threats, Scott AFB is partnering with the REPI Program and other local partners to manage stormwater within installation boundaries, taking a proactive, regional approach to storm water management.





# SCOTT AFB

## KEY FISCAL YEAR MILESTONES AT SCOTT AFB\*

**2020** The first REPI project was established at the installation to protect key flight training lands from incompatible development and flood risks.

**2024** Scott AFB received REPI Challenge funding to restore Silver Creek’s historical hydrology and reduce flooding.

\* These milestones demonstrate how the installation is strategically utilizing the REPI Program to mitigate encroachment risks and enhance mission assurance. While not exhaustive, the list highlights the various approaches installations are using to preserve critical testing and training capabilities essential to national defense.



Subscribe to the REPI Program Listserv by scanning the QR code.  
For more information about the REPI Program and supportive DoW efforts, please visit [www.repi.mil](http://www.repi.mil).