



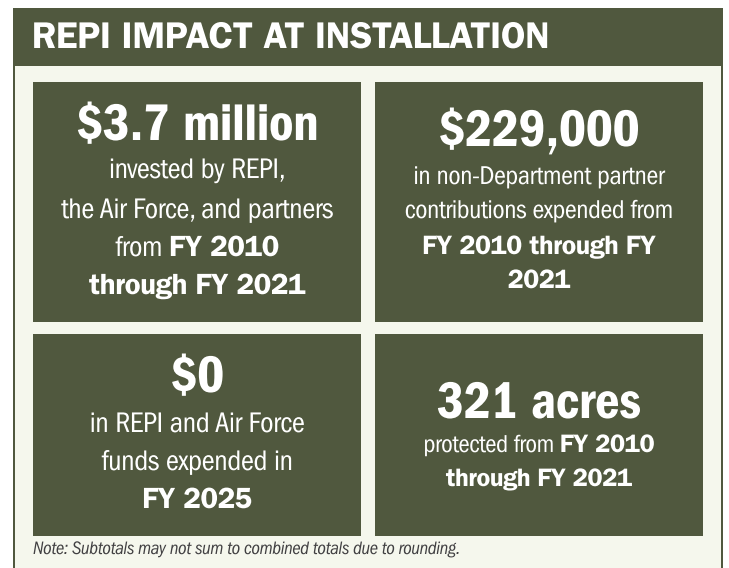
# TRAVIS AFB

## ABOUT THE INSTALLATION

Travis Air Force Base, located east of Fairfield near the San Francisco Bay Area, supports the 60th Air Mobility Wing—the Air Force’s largest mobility organization and a key provider of global airlift and aerial refueling. Known as the “Gateway to the Pacific,” Travis AFB moves more cargo and passengers than any other military air terminal in the nation, making it a critical hub for rapid power projection and global mobility operations.

## STRENGTHENING MISSION READINESS THROUGH REPI INVESTMENTS

The Department of War’s (DoW) Readiness and Environmental Protection Integration (REPI) Program supports Travis AFB’s ability to conduct uninterrupted flight operations and aircrew training by safeguarding the installation’s surrounding airspace from incompatible development.



## PROJECT OVERVIEW

### INCOMPATIBLE DEVELOPMENT—10 U.S.C. § 2684A

- Travis AFB depends on unobstructed airspace and surrounding land uses that do not create hazards—such as bird-aircraft strike risks—to sustain training and readiness for the Air Force’s largest mobility organization.
- The installation is leveraging REPI funds under 10 U.S.C. § 2684A to acquire easements around the installation to protect the unencumbered air space.
- The easements protect the land from incompatible uses such as wind turbines that interfere with radar, wetlands that attract a bird aircraft strike hazard, or housing development that can lead to noise complaints and mission restrictions.





# TRAVIS AFB

## PROJECT OVERVIEW (CONTINUED)

### NATURAL RESOURCES MANAGEMENT—10 U.S.C. § 2684A

- Encroachment internal to the base, specifically six federally listed threatened and endangered (T&E) species, prevent the base from effectively growing to support mission capabilities.
- Military expansion projects are required to ensure infrastructure can grow to meet training and operational demands, and with the increasing constraints placed by preserving T&E species and habitat, the installation cannot grow at the rate needed to support the missions that operate out of Travis AFB.
- The installation is leveraging the REPI Program to ensure the protection of the surrounding environment allows the installation to continue to support mission focus as the 60th Air Mobility Wing's home.



## KEY FISCAL YEAR MILESTONES AT TRAVIS AFB\*

2008



Travis AFB initiated its first REPI effort to prevent incompatible development near mission-critical flight corridors and protect operational airspace.

2021



Travis AFB expanded its buffer of protected land to reduce bird-strike hazards, prevent encroachment from wind turbines and residential growth, and safeguard key mission-essential projects, including the C-17 Assault Landing Zone and South Gate improvements.

2022



The installation completed an updated Air Installation Compatible Use Zone study to incorporate KC-46 requirements and strengthen long-term airspace protection for mobility operations.

\* These milestones demonstrate how the installation is strategically utilizing the REPI Program to mitigate encroachment risks and enhance mission assurance. While not exhaustive, the list highlights the various approaches installations are using to preserve critical testing and training capabilities essential to national defense.



Subscribe to the REPI Program Listserv by scanning the QR code.  
For more information about the REPI Program and supportive DoW efforts, please visit [www.repi.mil](http://www.repi.mil).