



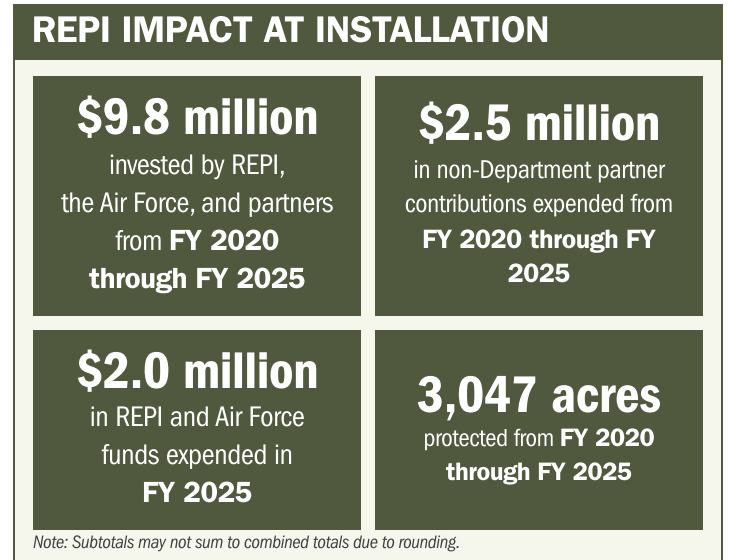
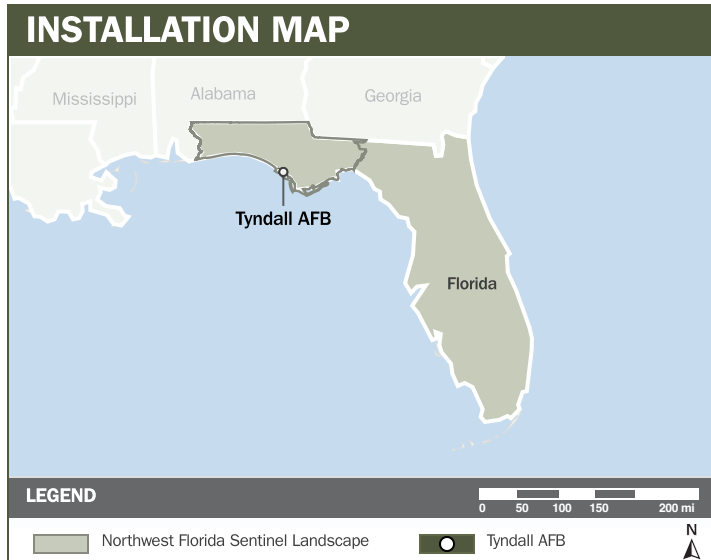
TYNDALL AFB

ABOUT THE INSTALLATION

Tyndall Air Force Base (AFB) is located in northwest Florida, and part of the Northwest Florida Sentinel Landscape. The installation sits on the Florida Panhandle peninsula surrounded by the Gulf of America (GOA), St. Andrew Bay, St. Andrew Sound, and East Bay. Its geographic position makes the base a critical training location for the U.S. Department of War as it provides immediate access to safe airspace over the GOA. Tyndall AFB is part of a complex of installations, ranges, military operating areas, and airspace in northwest Florida essential to maintaining U.S. air dominance with its fleet of F-22 Raptors, the largest in the Department. With 250 training days a year, the Air Force is working to protect and maintain the unencumbered nature of its mission footprint. Additionally, Tyndall is home of the 325th Fighter Wing, providing training for all F-22A Raptor pilots.

STRENGTHENING MISSION READINESS THROUGH REPI INVESTMENTS

The DoW's Readiness and Environmental Protection Integration (REPI) Program aims to protect the unencumbered airspace used for flight training and operations. The REPI Program is a key partner in helping use nature-based solutions to build living shorelines and increase coastal resilience at the installation.



PROJECT OVERVIEW

INSTALLATION RESILIENCE-SIKES ACT (16 U.S.C. § 670c-1)

- Tyndall AFB's coastal location exposes mission critical operations to sea level rise, storm surge, high wind events, and shoreline erosion that threaten aircraft training, autonomous systems development, and Marine Air Ground Task Force training.
- These coastal hazards jeopardize the infrastructure and range assets required to sustain these defense capabilities, creating risks to flight operations, readiness, and long-term mission viability.



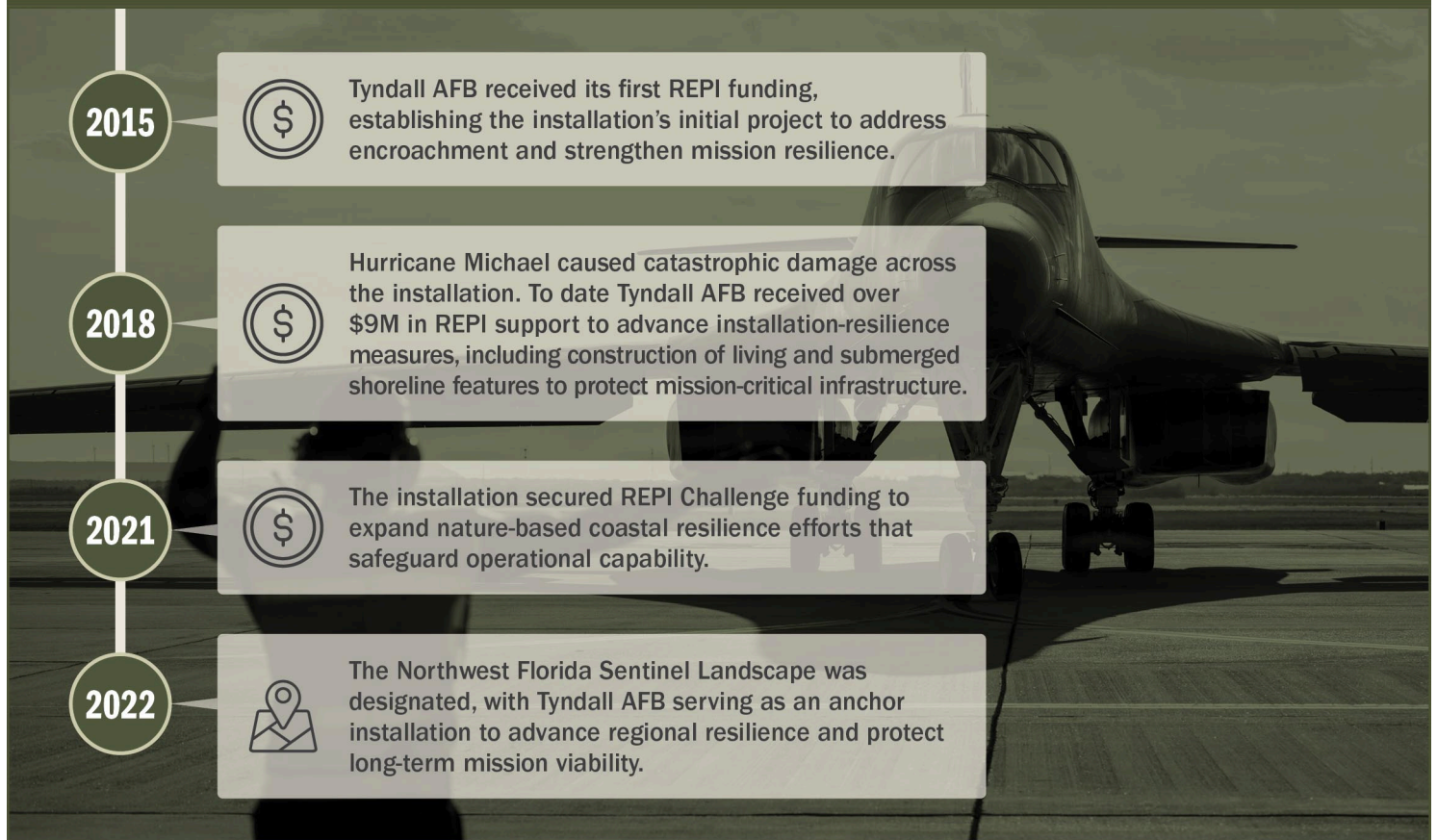


TYNDALL AFB

PROJECT OVERVIEW (CONTINUED)

- To protect these missions, Tyndall AFB is using REPI funds under 16 U.S.C. § 670c1 to construct oyster reefs and living shoreline projects, forming a comprehensive natural and traditional infrastructure system along the 40 mile shoreline to stabilize the coast and safeguard mission essential assets.

KEY FISCAL YEAR MILESTONES AT TYNDALL AFB*



* These milestones demonstrate how the installation is strategically utilizing the REPI Program to mitigate encroachment risks and enhance mission assurance. While not exhaustive, the list highlights the various approaches installations are using to preserve critical testing and training capabilities essential to national defense.



Subscribe to the REPI Program Listserv by scanning the QR code.
For more information about the REPI Program and supportive DoW efforts, please visit www.repi.mil.