



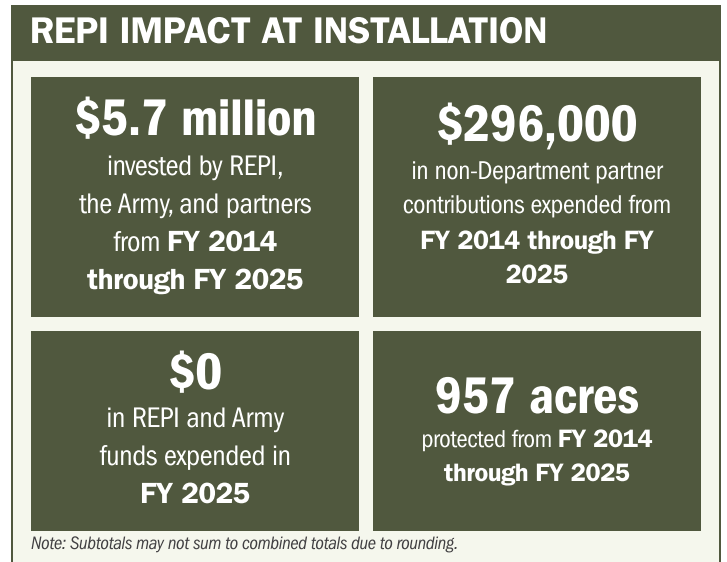
# U.S. ARMY GARRISON ALASKA

## ABOUT THE INSTALLATION

U.S. Army Garrison Alaska (USAG-Alaska) is home to United States Army Alaska's "Arctic Warriors," including the 1st Stryker Brigade Combat Team, 25th Infantry Division. Located in Fairbanks, the installation endures extreme winter temperatures that can drop to minus 50 degrees, while in warmer months, nearly 80 percent of the post transitions into wetlands. These conditions create unique regulatory pressures on the use of training lands, compounded by encroachment from nearby development.

## STRENGTHENING MISSION READINESS THROUGH REPI INVESTMENTS

The Department of War (DoW) Readiness and Environmental Protection Integration (REPI) Program has played a critical role in supporting USAG-Alaska's long-term operational success. REPI funding has helped prevent incompatible development, preserve training flexibility in Alaska's challenging environment, and maintain mission-critical capabilities beyond the installation boundary. REPI funding is also critical for addressing wildfire threats and augmenting the Community Wildfire Protection Plans (CWPPs) for the Northern Region implementation.



## PROJECT OVERVIEW

### INCOMPATIBLE DEVELOPMENT—10 U.S.C. § 2684A

- USAG-Alaska's national defense mission relies on the ability to move troops between dispersed training areas, particularly during large-scale exercises.
- Preserving compatible land uses along the installation boundary is essential to preventing noise-related restrictions on live-fire training the Fort Wainwright.
- To counter these threats, Fort Wainwright is leveraging REPI Program authorities under 10 U.S.C. § 2684a to protect critical training land. These efforts safeguard the Small Arms Complex, ensuring the Stryker Brigade and other Army Alaska units retain the training capabilities required for mission readiness.





# U.S. ARMY GARRISON ALASKA

## PROJECT OVERVIEW (CONTINUED)

### INSTALLATION RESILIENCE—10 U.S.C. § 2684A

- Beyond reducing the threat of incompatible development, this project protects maneuver exercises and supports future range and cantonment construction, where wetlands fill is often unavoidable due to Alaska’s terrain.
- More than 80 percent of USAG Alaska is classified as wetlands, making it nearly impossible to conduct maneuver or construction activities without encountering wetland areas and associated regulatory requirements.
- By meeting compensatory mitigation requirements through REPI partnerships, Fort Wainwright can reduce mission impacts, lower long-term costs, and avoid permanent restrictions on the use of wetlands for training. This approach preserves operational flexibility and ensures that critical training lands remain available to support Army Alaska’s readiness mission.



## KEY FISCAL YEAR MILESTONES AT USAG ALASKA\*

2014

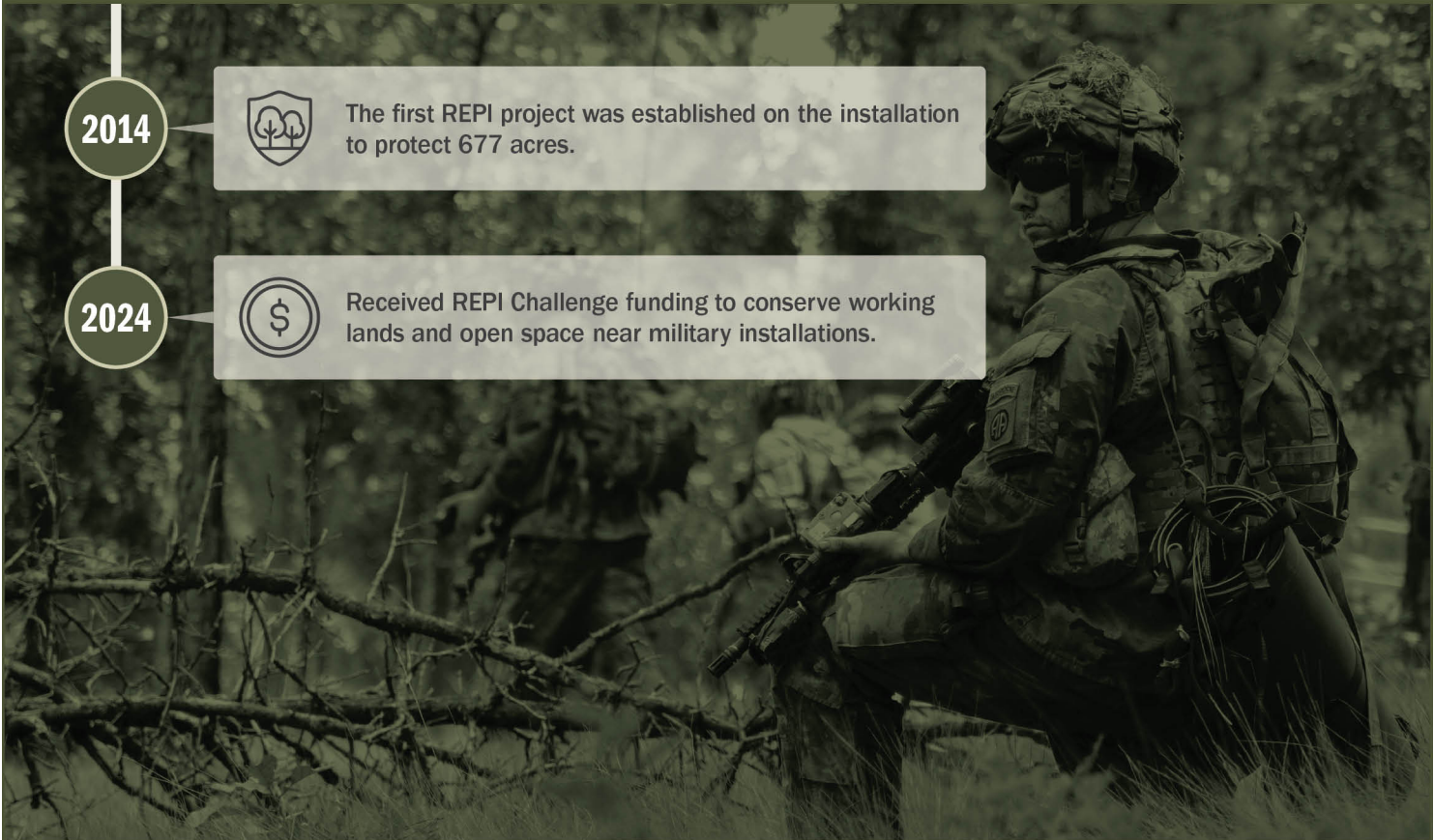


The first REPI project was established on the installation to protect 677 acres.

2024



Received REPI Challenge funding to conserve working lands and open space near military installations.



\* These milestones demonstrate how the installation is strategically utilizing the REPI Program to mitigate encroachment risks and enhance mission assurance. While not exhaustive, the list highlights the various approaches installations are using to preserve critical testing and training capabilities essential to national defense.



Subscribe to the REPI Program Listserv by scanning the QR code.  
For more information about the REPI Program and supportive DoW efforts, please visit [www.repi.mil](http://www.repi.mil).