



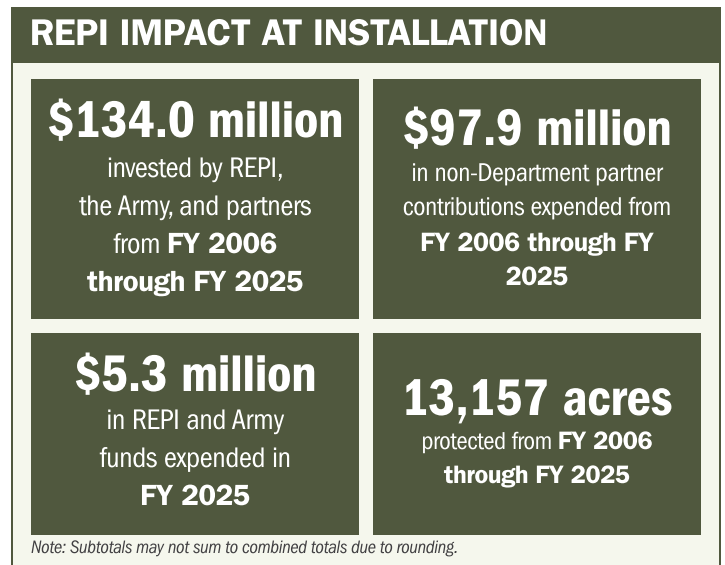
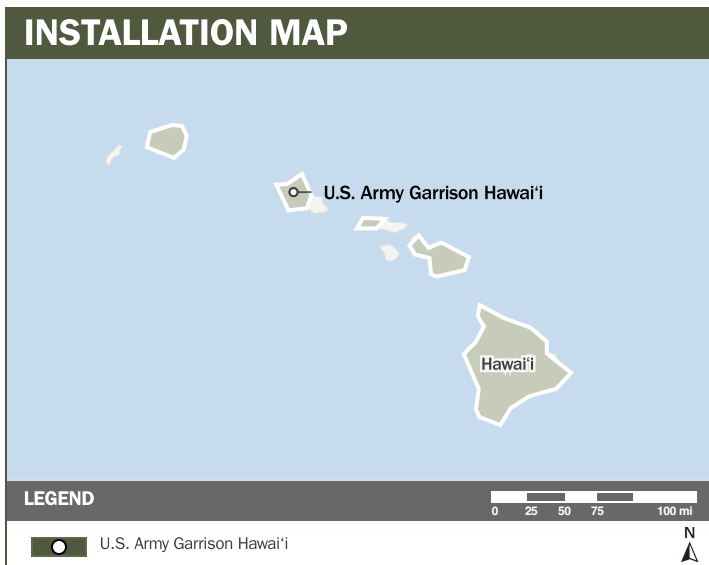
# U.S. ARMY GARRISON HAWAI'I

## ABOUT THE INSTALLATION

U.S. Army Garrison–Hawai'i (USAG-HI), including Pōhakuloa Training Area, anchors Army operations in the Hawai'i Sentinel Landscape, and provides a forward, combat-credible platform for the Pacific theater. From its headquarters at Wheeler Army Airfield and major installations such as Fort Shafter and Schofield Barracks, USAG-HI enables rapid force mobilization for combat missions and crisis response across the Indo-Pacific.

## STRENGTHENING MISSION READINESS THROUGH REPI INVESTMENTS

The Department of War (DoW) Readiness and Environmental Protection Integration (REPI) Program has played a critical role in supporting USAG-HI's long-term operational success. Through strategic land conservation and partnership-driven investments, REPI funding has helped prevent incompatible development, preserve training flexibility, and sustain critical capabilities beyond the installation boundary.



## PROJECT OVERVIEW

### INCOMPATIBLE DEVELOPMENT—10 U.S.C. § 2684A

- USAG-HI's mission depends on unrestricted training access and rapid force mobilization. Accelerating urbanization on O'ahu threatens maneuver, reconnaissance, aviation, deployment, and largescale force on force training.
- Incompatible development reduces training realism and operational flexibility through noise complaint pressures, vertical construction, spectrum interference, and increased trespass and security risks.
- REPI investments under 10 U.S.C. § 2684a have protected more than 13,000 acres since 2006, preserving key training corridors while maintaining compatible land use around critical defense infrastructure and strengthening local food security through agricultural easements.





# U.S. ARMY GARRISON HAWAI'I

## PROJECT OVERVIEW (CONTINUED)

### HABITAT PRESERVATION AND INSTALLATION RESILIENCE —16 U.S.C. § 670C-1

- USAG-HI manages more than 100 threatened and endangered species (TES) across O’ahu and Hawai’i Island, and the presence of these species on Army-managed lands increases training and operational restrictions. As wildfire threats intensify, risks to TES habitat grow, further weakening installation resilience.
- Invasive species control, fuels reduction, watershed improvements, and habitat restoration reduce training constraints and prevent wildfire encroachment on key ranges, protecting Army infrastructure, personnel, and off post habitat.
- Under authority 16 U.S.C. § 670c, REPI investments enable targeted habitat and species protection that directly preserves training flexibility and reduces mission impacts tied to environmental encroachment.



## KEY FISCAL YEAR MILESTONES AT USAG-HI\*

2006



First REPI funded project at Waimea Valley, preventing incompatible development adjacent to Kawailoa and Kahuku Training Areas and ensuring permanent protection of this critical ahupua’a.

2021



USAG-HI secures its first REPI Challenge project and partnership with Hawai’i State Department of Land and Natural Resources Division of Forestry and Wildlife to address wildland fire threats surrounding Schofield Barracks and Pōhakuloa Training Area.

2023



USAG-HI leveraged REPI Program partnerships to identify an additional 3,800 acres for protection.

2024



Formal designation is received for the Hawai’i Sentinel Landscape which spans over two million acres and includes key military installations: Pōhakuloa Training Area on Hawai’i Island; Pacific Missile Range Facility on Kaua’i; and Marine Corps Base Hawai’i, Joint Base Pearl Harbor-Hickam, and U.S. Army Garrison Hawai’i on O’ahu.



\* These milestones demonstrate how the installation is strategically utilizing the REPI Program to mitigate encroachment risks and enhance mission assurance. While not exhaustive, the list highlights the various approaches installations are using to preserve critical testing and training capabilities essential to national defense.



Subscribe to the REPI Program Listserv by scanning the QR code.  
For more information about the REPI Program and supportive DoW efforts, please visit [www.repi.mil](http://www.repi.mil).