



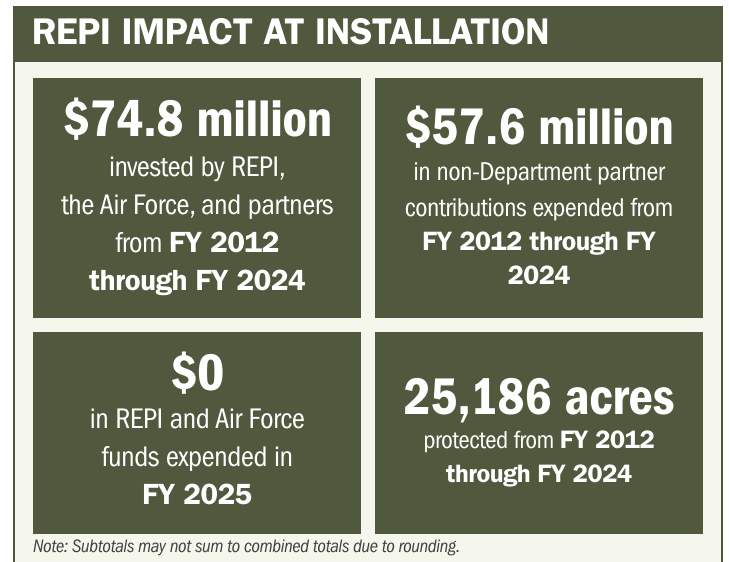
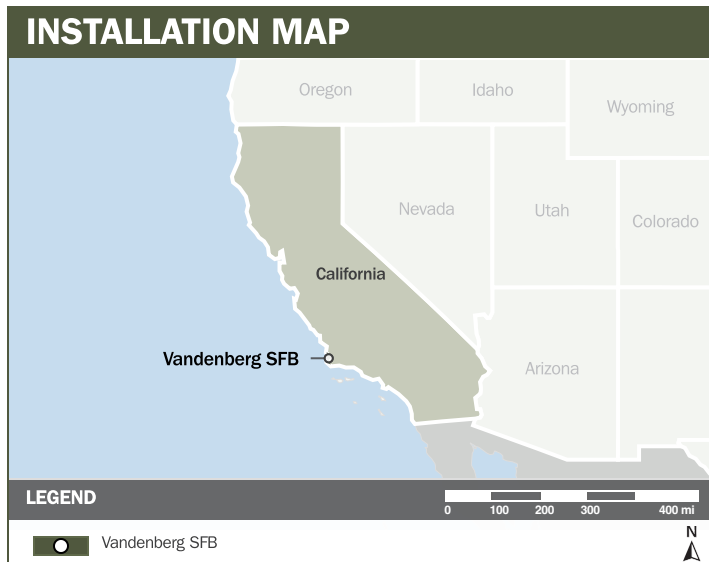
VANDENBERG SFB

ABOUT THE INSTALLATION

Vandenberg Space Force Base (SFB) is one of the primary west coast tactical Air Force locations. The installation's mission is to launch and track satellites in space, test and evaluate U.S. intercontinental ballistic missiles (ICBM) systems, and support aircraft operations in the Western range ocean airspace. Vandenberg SFB conducts the United States' only test launches of land-based ICBMs, operational and test launches of the nation's ground-based midcourse missile defense interceptors, and polar-orbit space launches. More than 1.9K missions using more than 50 different launch vehicle types have been conducted over the base's 60+ year history.

STRENGTHENING MISSION READINESS THROUGH REPI INVESTMENTS

The Department of War's (DoW) Readiness and Environmental Protection Integration (REPI) Program has played a critical role in supporting Vandenberg SFB's long-term operational success. Through targeted land easements and partnership driven investments, REPI funding helps prevent incompatible development, protect key training corridors from wildfire risks, and preserve the installation's ability to conduct launches.



PROJECT OVERVIEW

INCOMPATIBLE DEVELOPMENT—10 U.S.C. § 2684A

- Vandenberg SFB faces development pressure that would impair mission capabilities by encroaching upon launch hazard areas, impacting the growing number of missions and annual launches.
- Vandenberg SFB is also faced with increasing hurdles from regulatory agencies over environmental and noise impacts the increase in operations will bring.
- To protect the installation's mission, Vandenberg SFB is partnering with the REPI Program to leverage easements and protect land under Impact Limit Lines from local incompatible development to protect the installation's missions.





VANDENBERG SFB

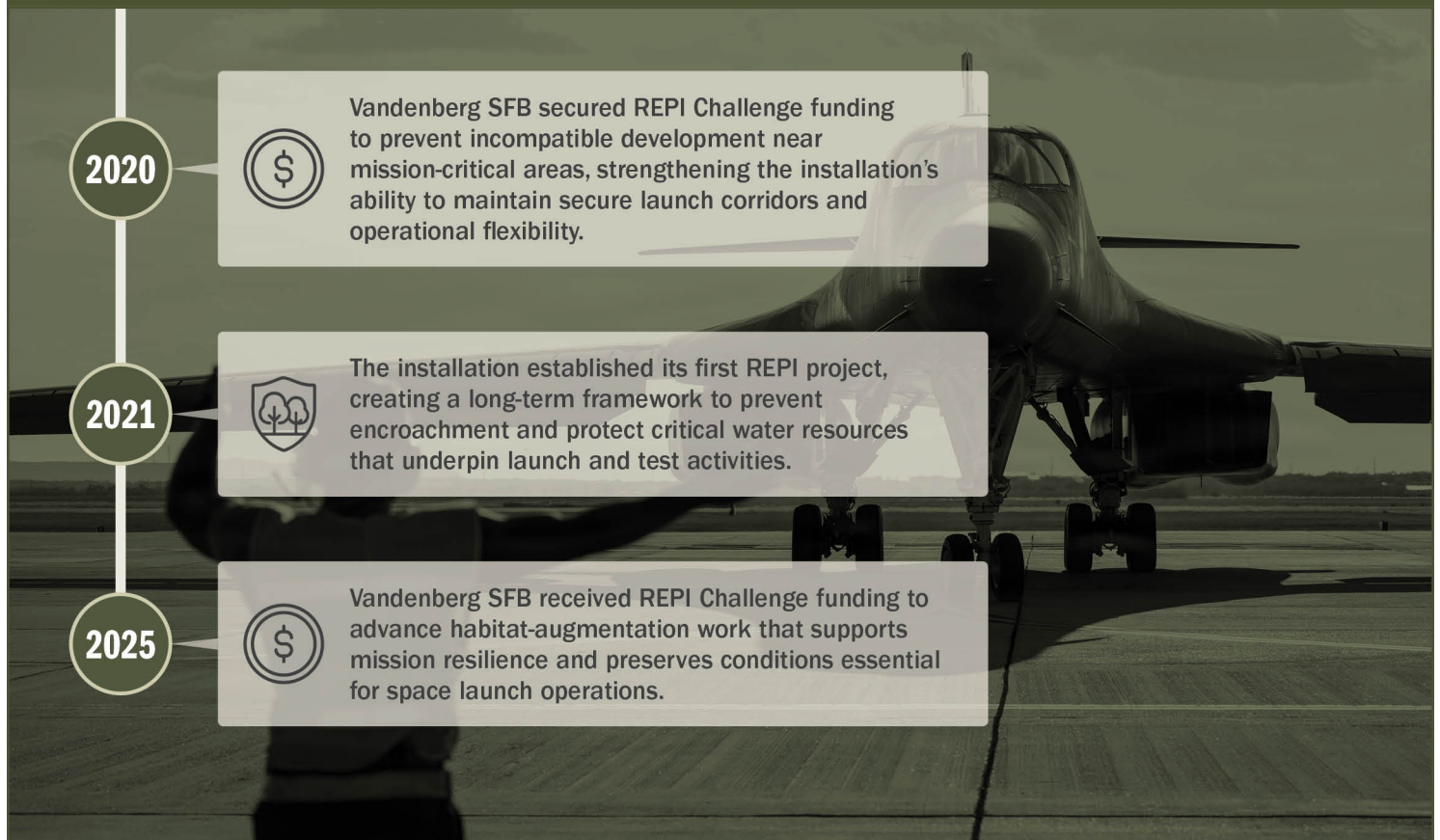
PROJECT OVERVIEW (CONTINUED)

INSTALLATION RESILIENCE (10 U.S.C. § 2684A)

- Vandenberg SFB is located in a high fire risk area due to flammable chaparral in the landscape and increasing stress and depletion of groundwater supplies.
- Worsening drought conditions have cascading effects that impact installation mission, deplete water resources needed to sustain the base community, and negatively impact water resources needed to fight wildfires.
- Leveraging authority under 10 U.S.C. § 2684a, this REPI project will help protect the natural and working landscape around the base to strengthen wildfire resilience and enhance water resources that contribute to the regional groundwater availability.



KEY FISCAL YEAR MILESTONES AT VANDENBERG SFB*



* These milestones demonstrate how the installation is strategically utilizing the REPI Program to mitigate encroachment risks and enhance mission assurance. While not exhaustive, the list highlights the various approaches installations are using to preserve critical testing and training capabilities essential to national defense.



Subscribe to the REPI Program Listserv by scanning the QR code.
For more information about the REPI Program and supportive DoW efforts, please visit www.repi.mil.