



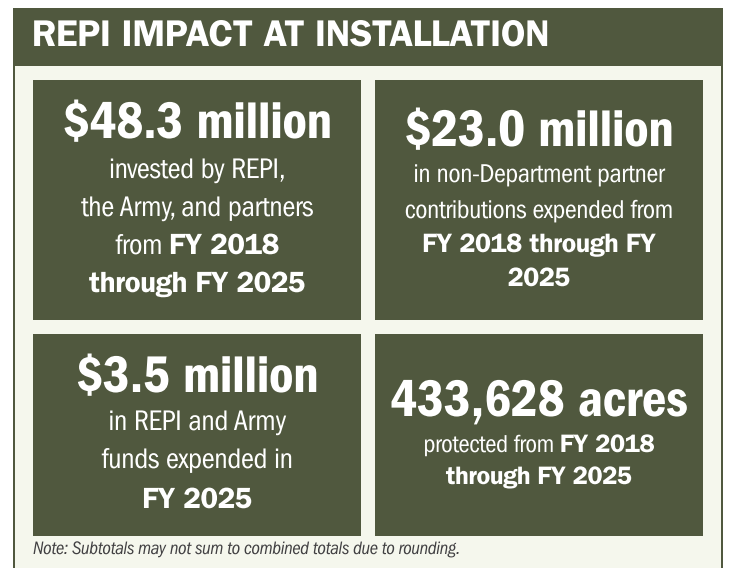
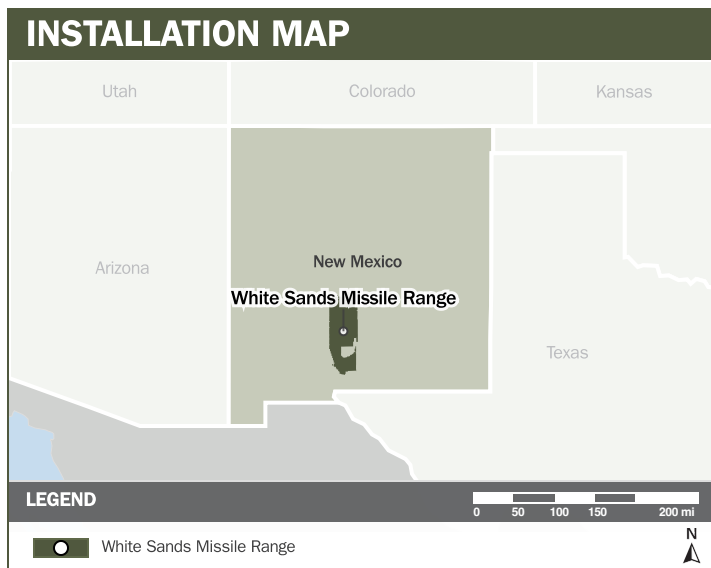
WHITE SANDS MISSILE RANGE

ABOUT THE INSTALLATION

White Sands Missile Range (WSMR) is the nation’s premier military test range and the “Birthplace of America’s Missile and Space Activity.” Spanning 3,200 square miles, WSMR supports the Army, Navy, and Air Force, as well as commercial and international partners, conducting more than 3,000 tests each year. Its expansive land and airspace enable advanced weapons testing, missile development, space systems evaluation, and multi-domain experimentation critical to national defense.

STRENGTHENING MISSION READINESS THROUGH REPI INVESTMENTS

The Department of War (DoW) Readiness and Environmental Protection Integration (REPI) Program has played a critical role in supporting WSMR’s long-term operational success. Through strategic land conservation and partnership -driven investments, REPI efforts help prevent incompatible development, protect test and training flexibility, and preserve mission -critical capabilities beyond the installation boundary.



PROJECT OVERVIEW

INCOMPATIBLE DEVELOPMENT—10 U.S.C. § 2684A

- WSMR faces incompatible development threats that endanger multi-service test and training missions, including long-range overflight testing, and maintain security and natural resources on approximately 596,000 acres of private and state lands.
- The installation is leveraging REPI funds to reduce the likelihood of conflicts from population growth and development near the main installation and surrounding areas, preventing negative impacts to flight corridors, restricted airspace, noise, dust, and electromagnetic interference.
- Through this partnership, the program will help ensure that night training, operational testing, and other mission activities remain realistic and effective by minimizing light pollution, infrastructure conflicts, and other encroachment-related challenges.





WHITE SANDS MISSILE RANGE

KEY FISCAL YEAR MILESTONES AT WHITE SANDS MISSILE RANGE*

2017 Developed its first REPI project to initiate encroachment reduction efforts that support long-term mission assurance.

2019 Received REPI Challenge funding to protect 337,660 acres from incompatible development, strengthening buffers for multi-service test and training missions.

2021 Received REPI Challenge funding to protect 120,000 acres, enhancing installation resilience and safeguarding critical flight corridors and restricted airspace.

* These milestones demonstrate how the installation is strategically utilizing the REPI Program to mitigate encroachment risks and enhance mission assurance. While not exhaustive, the list highlights the various approaches installations are using to preserve critical testing and training capabilities essential to national defense.



Subscribe to the REPI Program Listserv by scanning the QR code.
For more information about the REPI Program and supportive DOD efforts, please visit www.repi.mil.